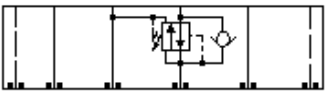
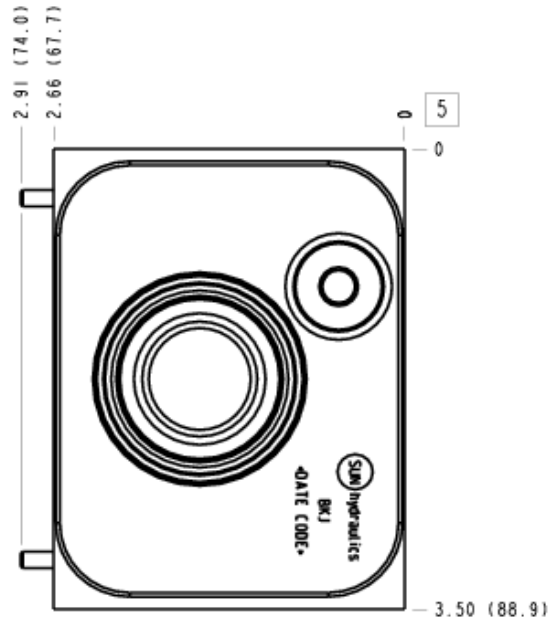
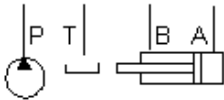


Reducing, On B, drain to T with reverse flow check



Reducing/Relieving On B with reverse flow check



### TECHNICAL DATA

Body Type	Sandwich
Interface	ISO 07
Body Features	Reducer on B with reverse flow check
Stack Height	70 mm
Seal Plate Included (see notes)	Yes
Open Cavities	1
Cavity	T-17A
Model Weight	2.32 kg.

### NOTES

- Stack height value in technical data table includes seal retainer plate.
- Seal plate mounts on side opposite solenoid valve.
- **Important:** Carefully consider the maximum system pressure. The pressure rating of the manifold is dependent on the manifold material, with the port type/size a secondary consideration. Manifolds constructed of aluminum are not rated for pressures higher than 3000 psi (210 bar), regardless of the port type/size specified.

### INCLUDED COMPONENTS

Part	Description	Quantity
500-001-111	O-Ring	2
500-001-118	O-Ring	4
700-006	Seal Plate	1
811-001-006	Pin	2
A330-006-006	SAE Plug	1
CXHAXCN	Cartridge	1

### CONFIGURATION OPTIONS

Model Code Example: BKJ

#### MODIFIER

**6061-T651 Aluminum, Buna-N**

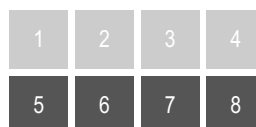
/S 65-45-12 Ductile Iron, Buna-N, Blackened

/V 6061-T651 Aluminum, Viton

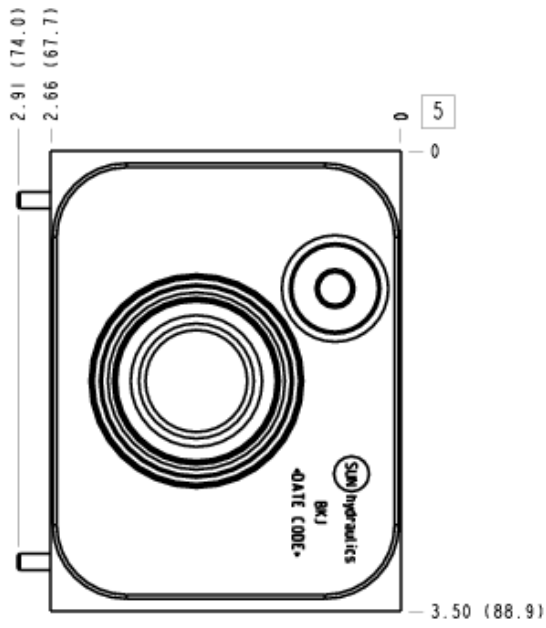
/Y 65-45-12 Ductile Iron, Viton, Blackened

### MANIFOLD FACES

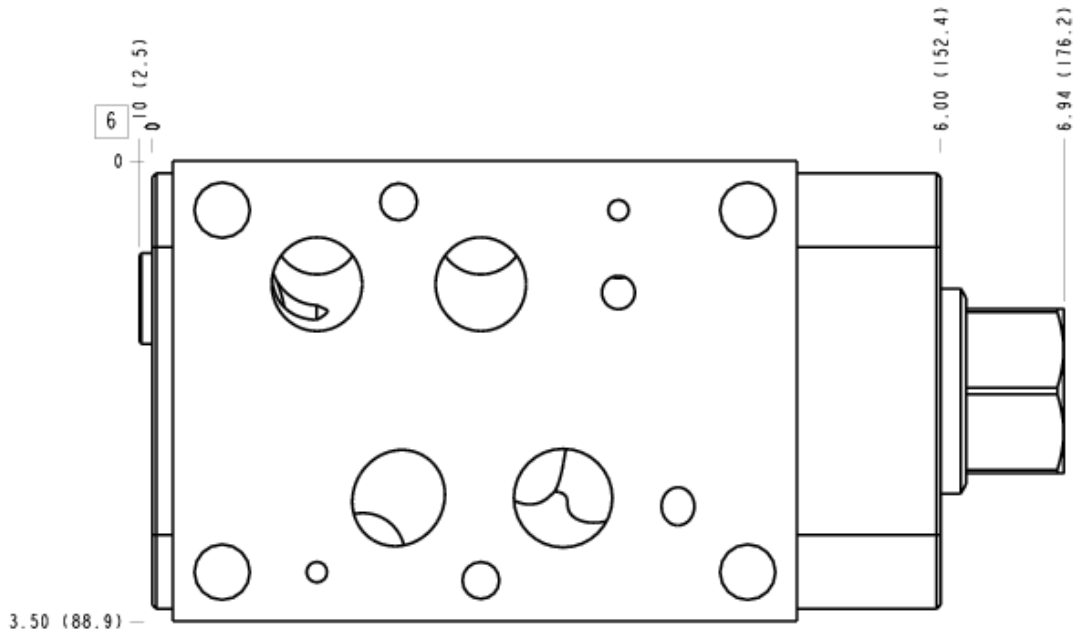
#### FACE GRID



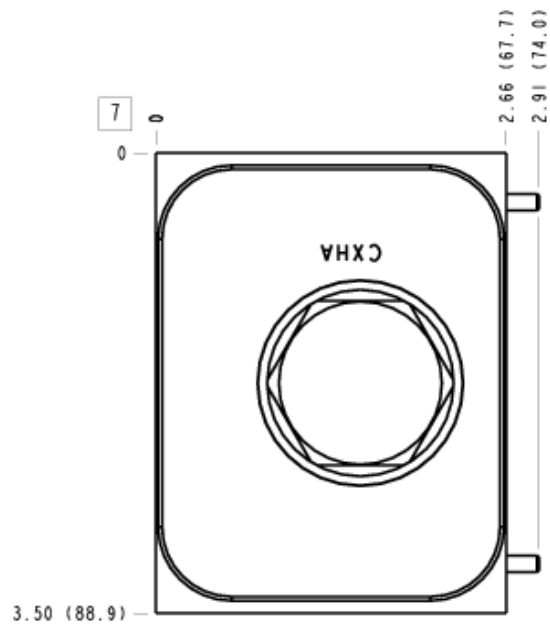
**Face 5**



**Face 6**



### Face 7



### Face 8

