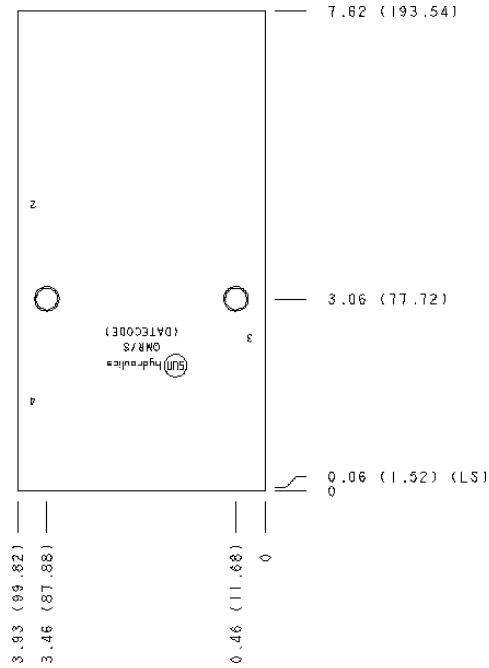


CONFIGURATION

/S Modifier 65-45-12 Ductile Iron, Buna-N, Blackened



TECHNICAL DATA

Body Type	Line mount
Interface	None
Body Features	Ninety degree
Mounting Hole Thread	.375-16 UNC - 2B in.
Mounting Hole Thread	M10x1.5 - 6H (metric models)
Mounting Hole Depth	15,7 mm
Mounting Hole Quantity	2
Open Cavities	1
Cavity	T-34A
Port Size	1 1/2" Code 61
Model Weight	11.34 kg.

NOTES *Important:* Carefully consider the maximum system pressure. The pressure rating of the manifold is dependent on the manifold material, with the port type/size a secondary consideration. Manifolds constructed of aluminum are not rated for pressures higher than 3000 psi (210 bar), regardless of the port type/size specified.

PORT DESIGNATORS

Modifiers	Ports
QMR, /S	All Ports: 1 1/2" Code 61;
QMR/M, /T	Port 3: 1 1/2" Code 61; Ports 2 & 4: 1 1/4" Code 61;

CONFIGURATION OPTIONS

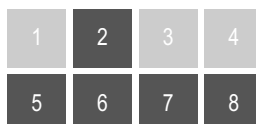
Model Code Example: QMR/S

MODIFIER _____ **(/S)**

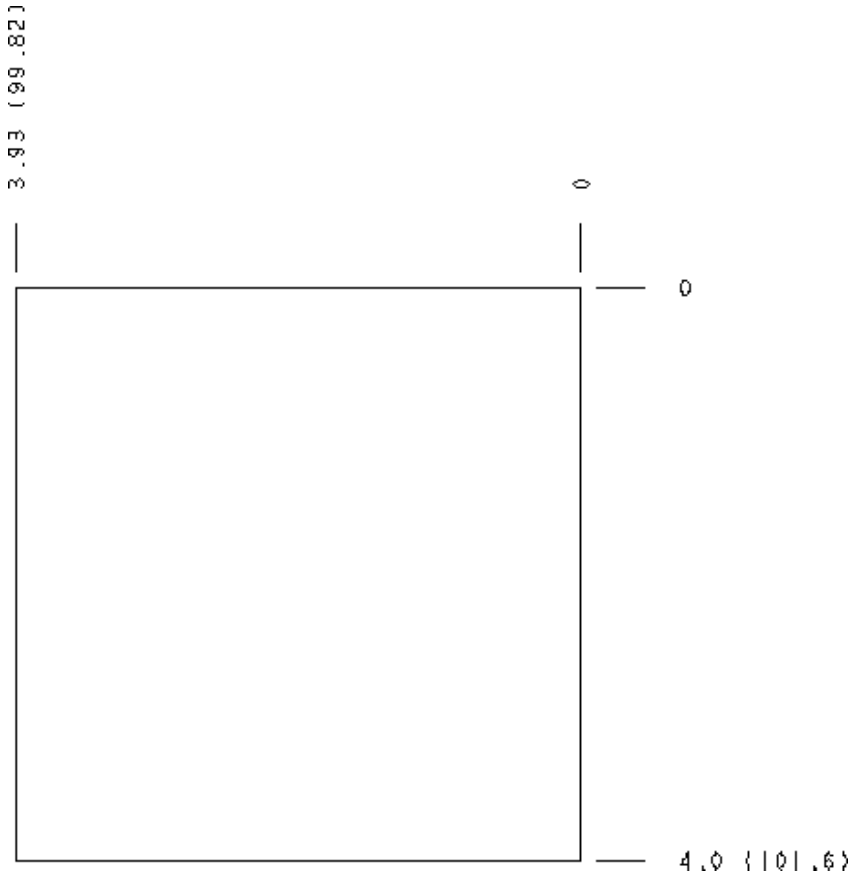
- /S** 65-45-12 Ductile Iron, Buna-N, Blackened
- 6061-T651 Aluminum, Buna-N
- /M 6061-T651 Aluminum, Metric, Buna-N
- /T 65-45-12 Ductile Iron, Metric, Buna-N, Blackened

MANIFOLD FACES

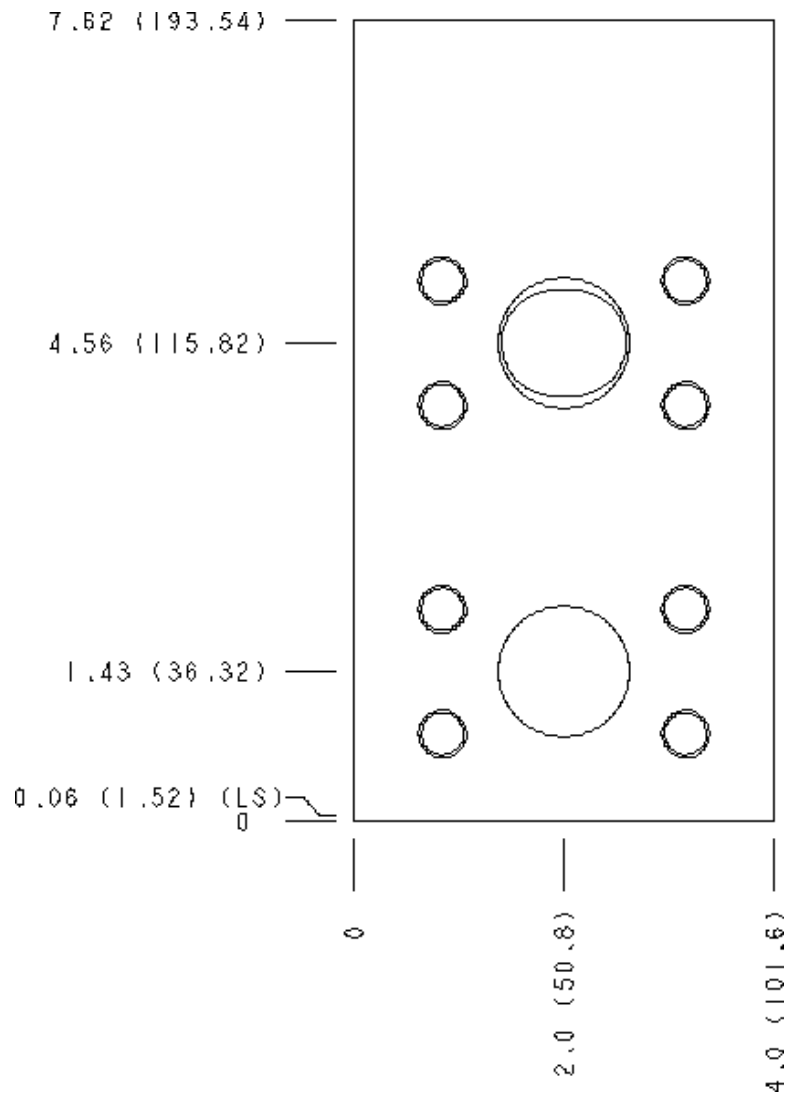
FACE GRID



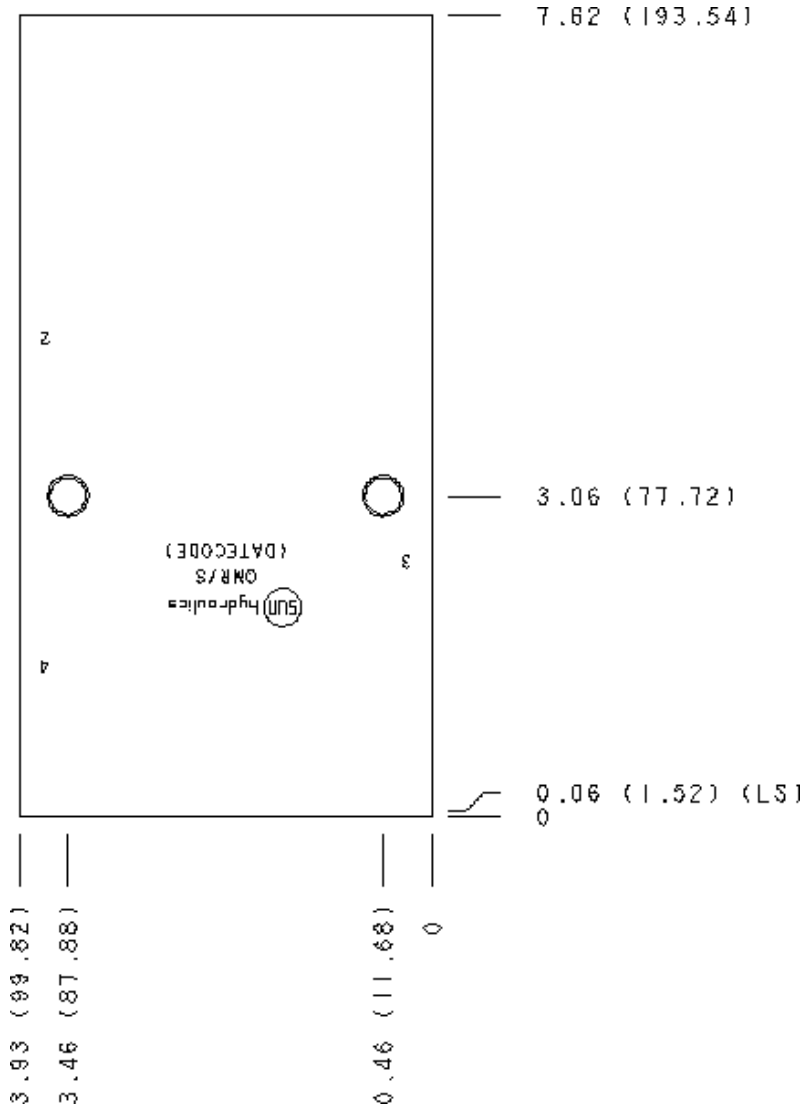
Face 2



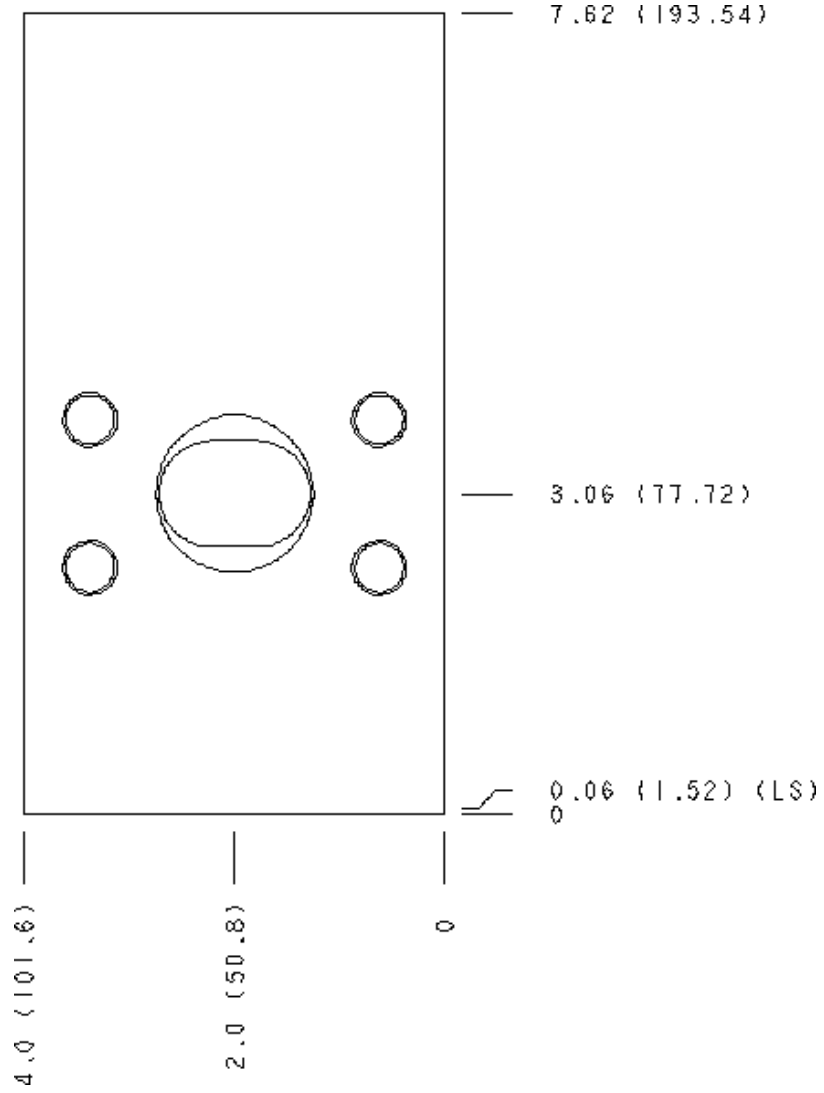
Face 5



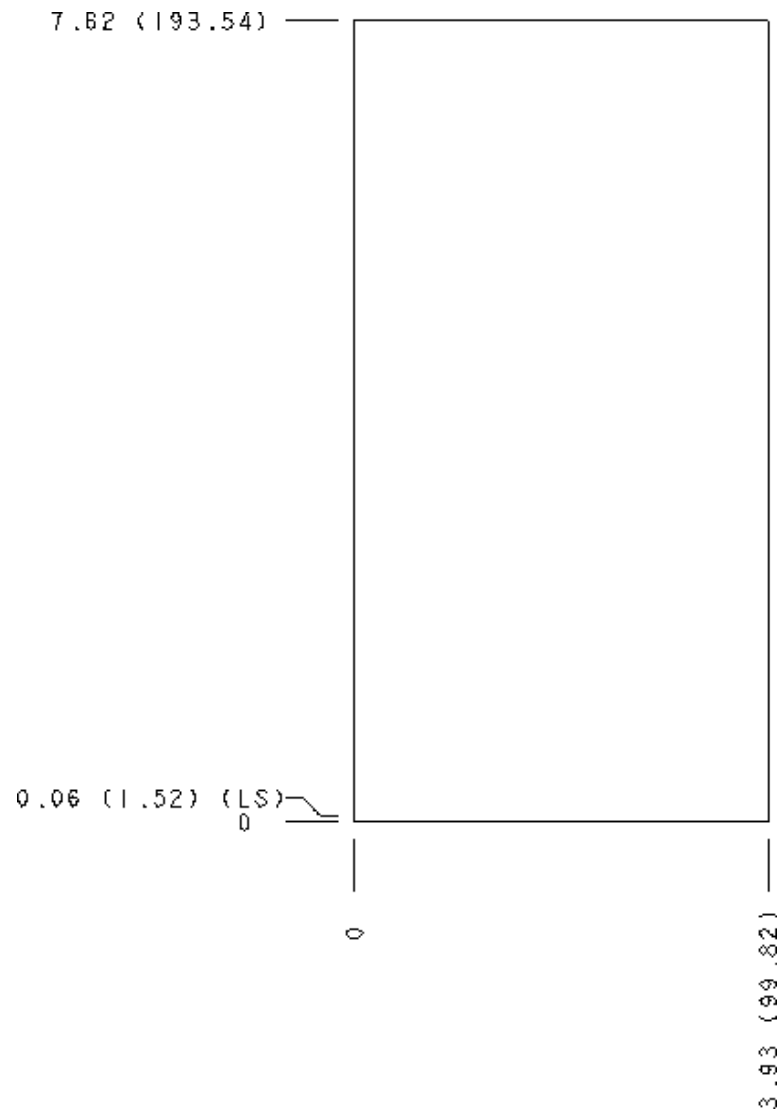
Face 6



Face 7



Face 8



Face 10

