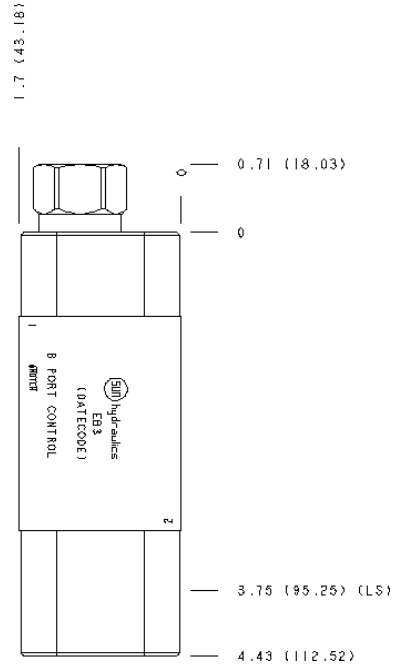
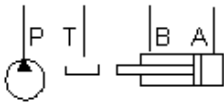


Reducing/Relieving, On B tank to T with reverse flow check



Pilot-operated, balanced-piston relief cartridges are normally closed pressure regulating valves. When the pressure at the inlet (port 1) reaches the valve setting, the valve starts to open to tank (port 2), throttling flow to regulate the pressure. These valves are accurate, have low pressure rise vs. flow, they are smooth and quiet, and are moderately fast.

TECHNICAL DATA

Body Type	Sandwich
Interface	ISO 03
Body Features	Reducer on B with reverse flow check
Stack Height	44,5 mm
Seal Plate Included (see notes)	Yes
Open Cavities	1
Cavity	T-11A
Model Weight	0.56 kg.

NOTES

- Stack height value in technical data table includes seal retainer plate.
- Important:** Carefully consider the maximum system pressure. The pressure rating of the manifold is dependent on the manifold material, with the port type/size a secondary consideration. Manifolds constructed of aluminum are not rated for pressures higher than 3000 psi (210 bar), regardless of the port type/size specified.

INCLUDED COMPONENTS

Part	Description	Quantity
500-001-012	O-Ring	4
700-002	Seal Plate	1
811-001-006	Pin	1
850-004-250	Plug	2
CXDAXCN	Cartridge	1

CONFIGURATION OPTIONS

Model Code Example: EB3

MODIFIER

- 6061-T651 Aluminum, Buna-N
- /S 65-45-12 Ductile Iron, Buna-N, Blackened
- /V 6061-T651 Aluminum, Viton
- /Y 65-45-12 Ductile Iron, Viton, Blackened

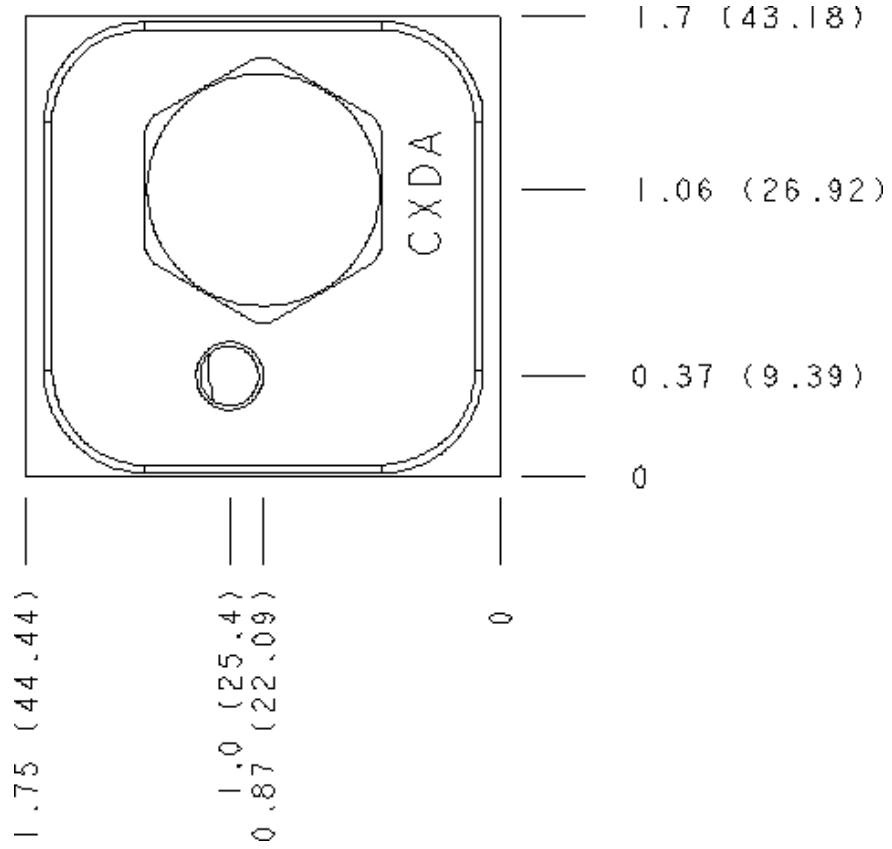
MANIFOLD FACES

FACE GRID



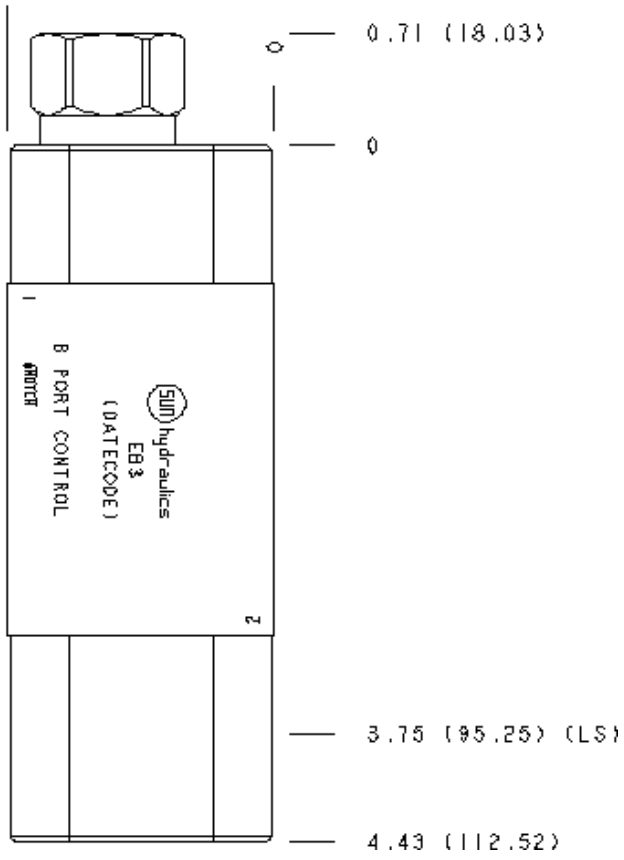
5	6	7	8
9	10	11	12

Face 2



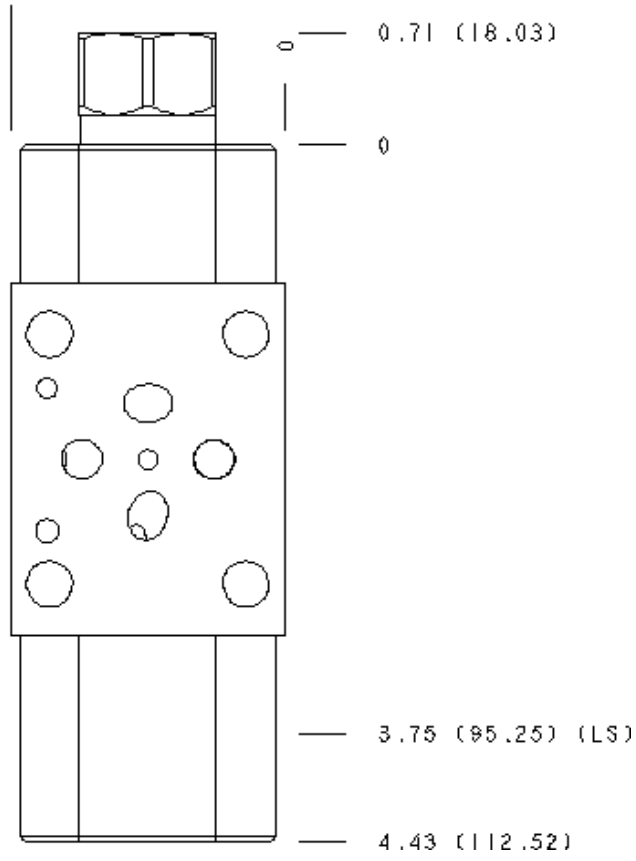
Face 5

1.7 (43.18)

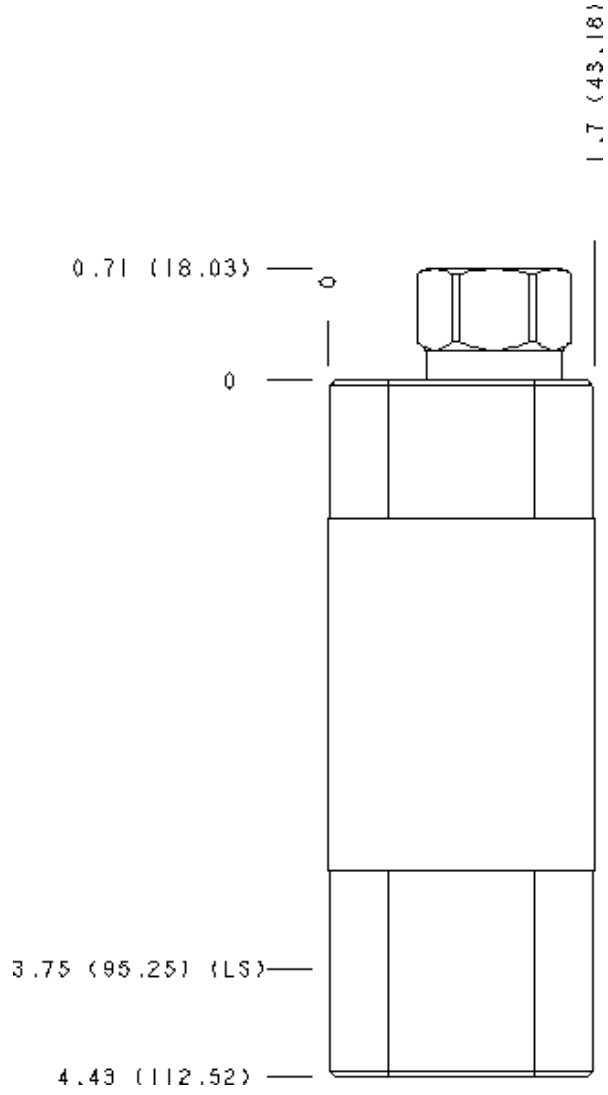


Face 6

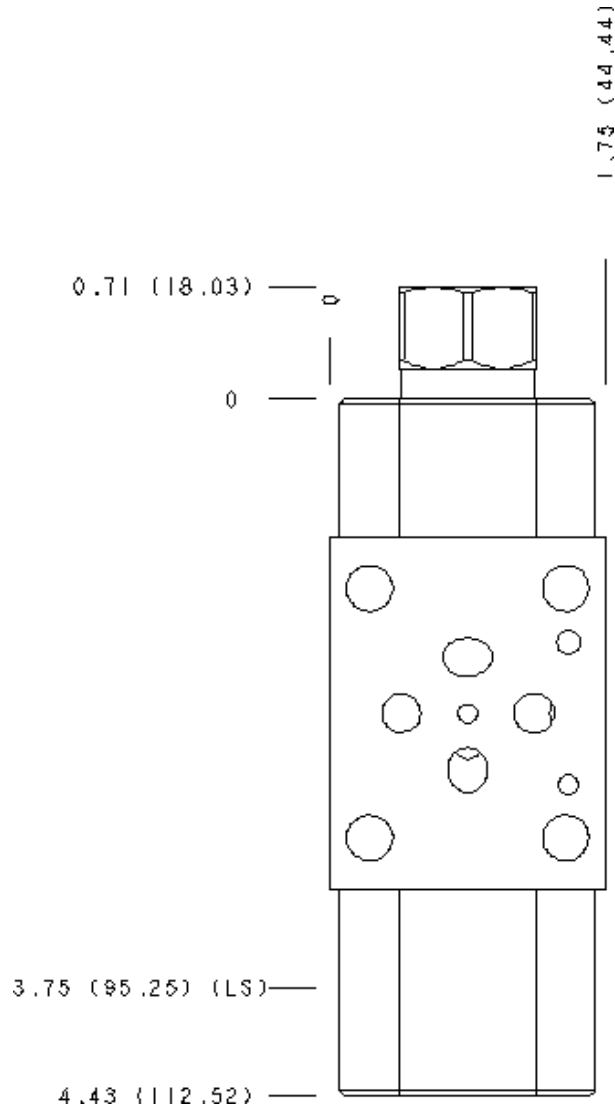
1.75 (44.44)



Face 7



Face 8



Face 10

