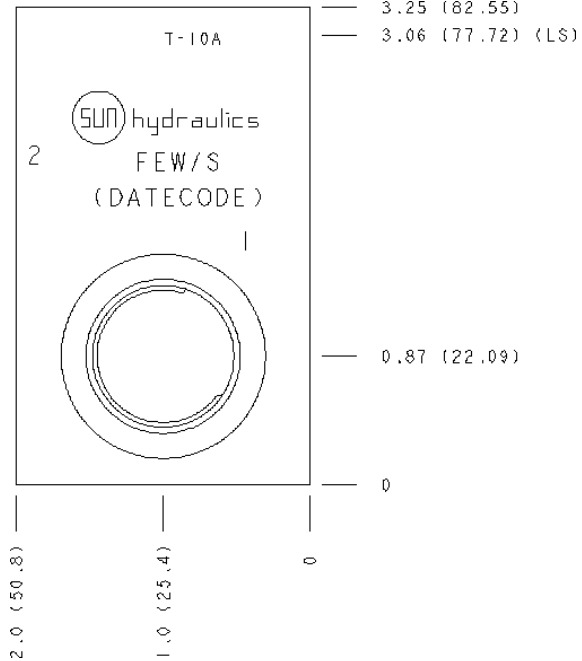


## CONFIGURATION

/S Modifier 65-45-12 Ductile Iron, Buna-N, Blackened



## TECHNICAL DATA

Body Type	Line mount
Interface	None
Body Features	Through port with gauge port
Mounting Hole Thread	.250-20 UNC - 2B in.
Mounting Hole Depth	12,7 mm
Mounting Hole Quantity	2
Open Cavities	1
Cavity	T-10A
Port Size	3/4" BSPP
Model Weight	1.13 kg.

## NOTES

**Important:** Carefully consider the maximum system pressure. The pressure rating of the manifold is dependent on the manifold material, with the port type/size a secondary consideration. Manifolds constructed of aluminum are not rated for pressures higher than 3000 psi (210 bar), regardless of the port type/size specified.

## PORT DESIGNATORS

Modifiers	Ports
FEW	Ports 1 & 2: 3/4" BSPP; Gage Port: 1/4" BSPP;

## CONFIGURATION OPTIONS

Model Code Example: FEW/S

MODIFIER (S)

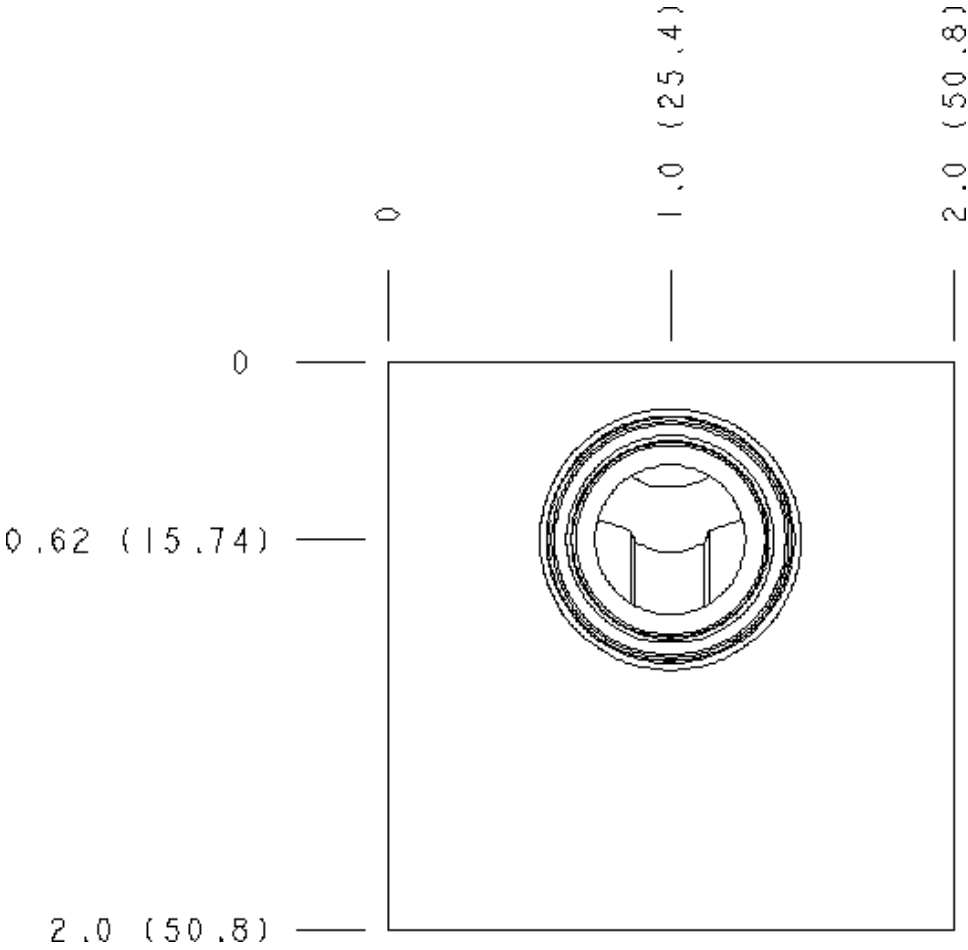
/S 65-45-12 Ductile Iron, Buna-N, Blackened  
6061-T651 Aluminum, Buna-N

## MANIFOLD FACES

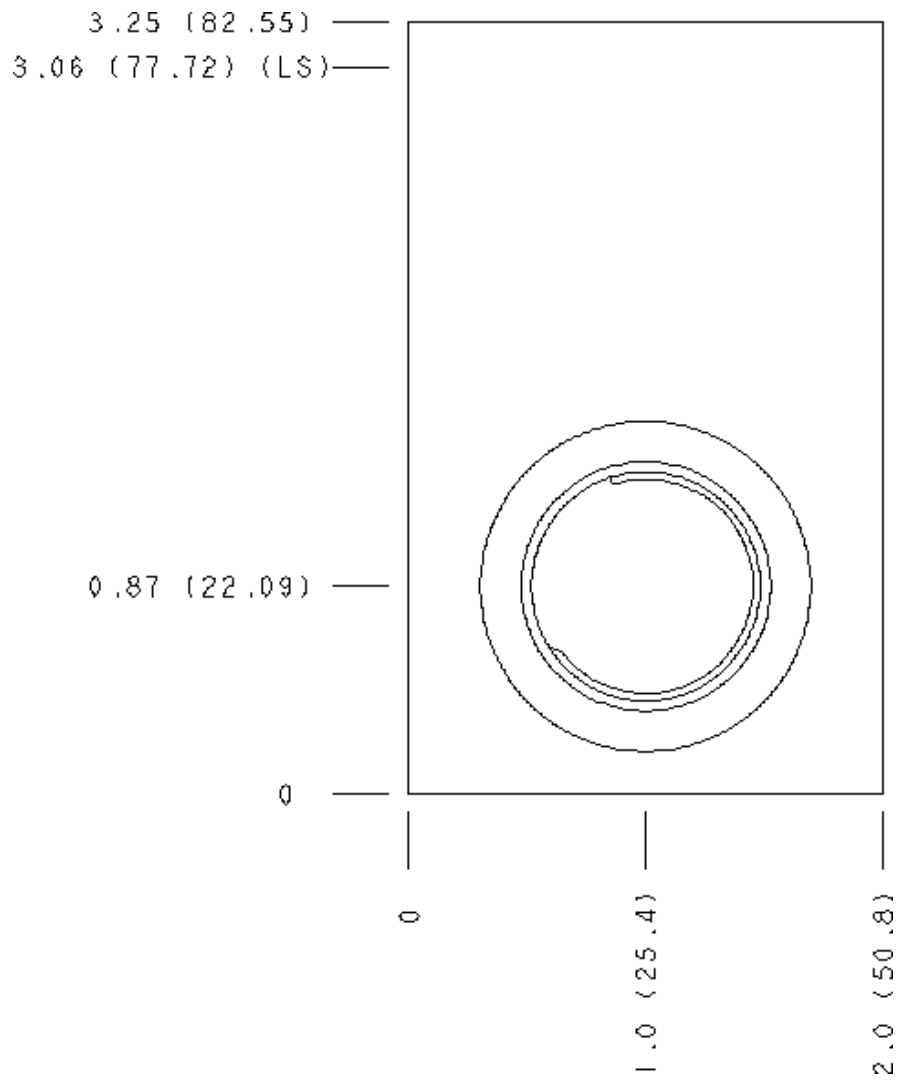
### FACE GRID

1	2	3	4
5	6	7	8
9	10	11	12

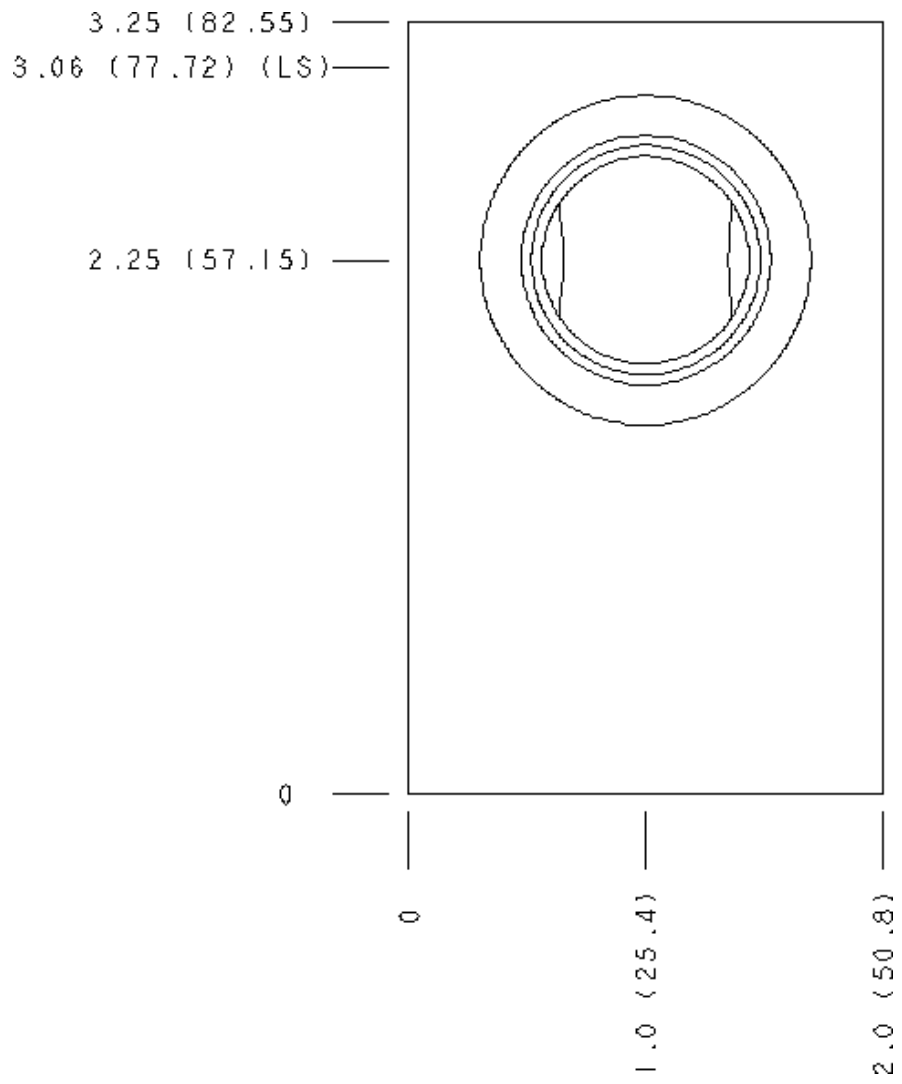
Face 2



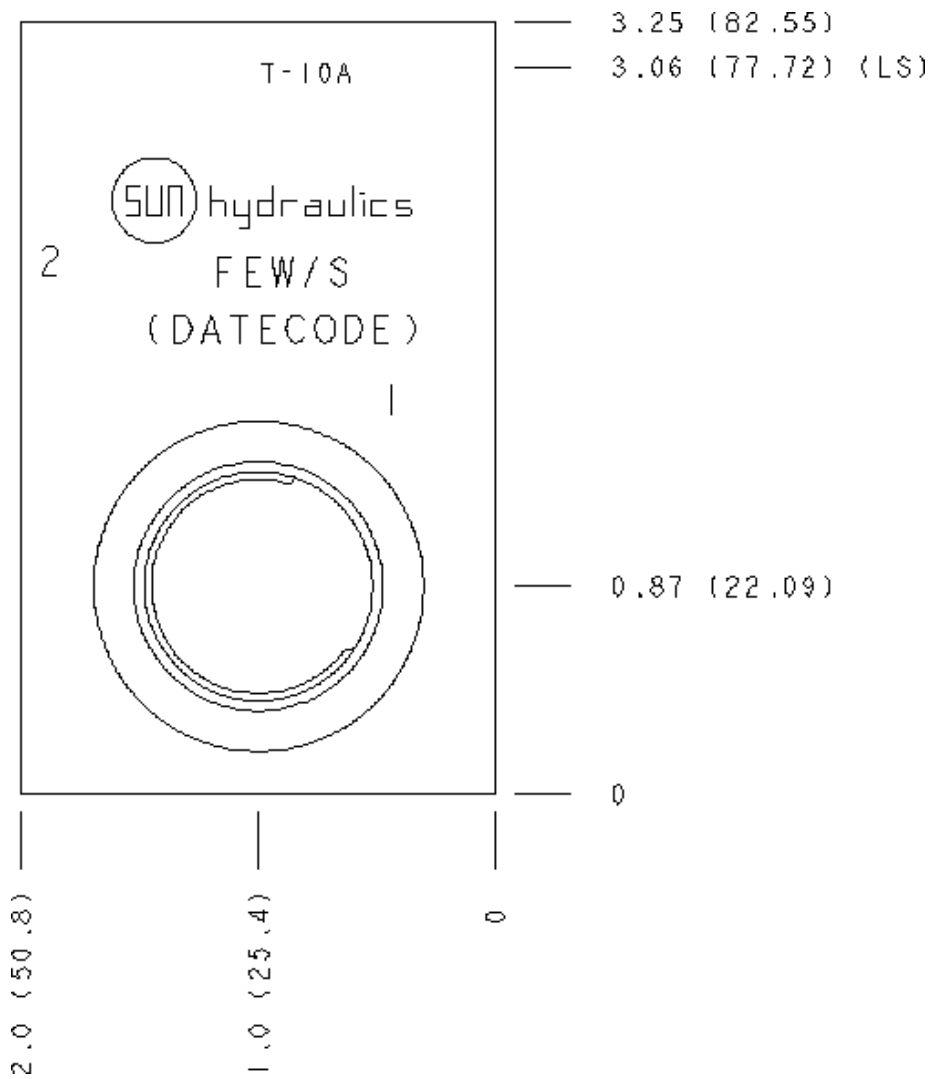
# Face 5



# Face 6



Face 7



Face 8

