

CONFIGURATION

X	Control	Not Adjustable
H	Differential Pressure	200 psi (14 bar)
N	Seal Material	Buna-N
(none)	Material/Coating	Standard Material/Coating

Normally open modulating elements without an internal orifice act as a restrictive compensator to maintain a constant pressure drop across an orifice, regardless of variations in upstream or downstream pressure.

TECHNICAL DATA

NOTE: DATA MAY VARY BY CONFIGURATION. SEE CONFIGURATION SECTION.

Cavity	T-11A
Series	1
Capacity	60 L/min.
Maximum Operating Pressure	350 bar
Valve Hex Size	22,2 mm
Valve Installation Torque	41 - 47 Nm
Seal kit - Cartridge	Buna: 990011007
Seal kit - Cartridge	Polyurethane: 990011002
Seal kit - Cartridge	Viton: 990011006
Model Weight	0.13 kg.

CONFIGURATION OPTIONS

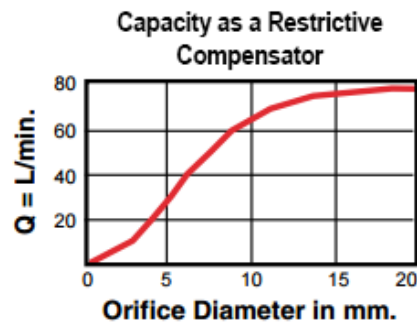
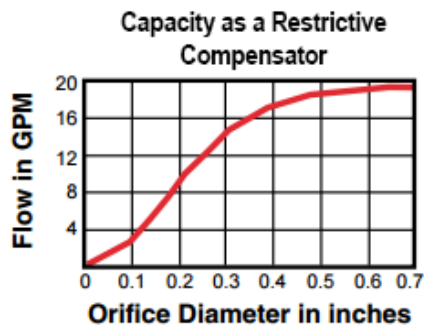
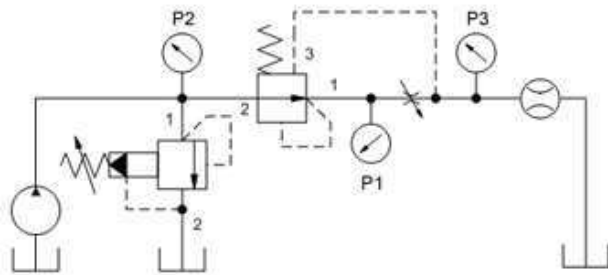
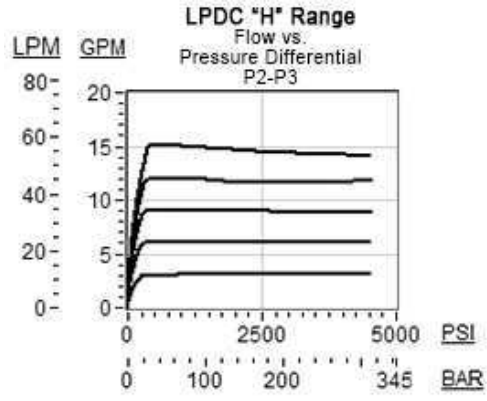
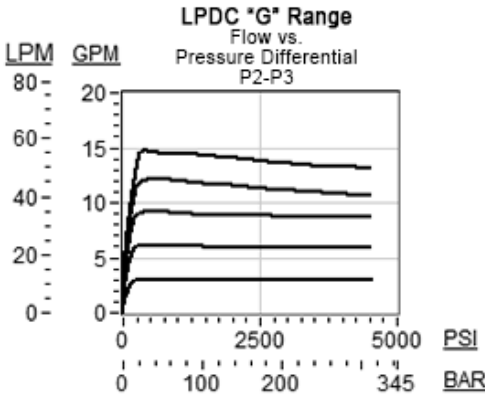
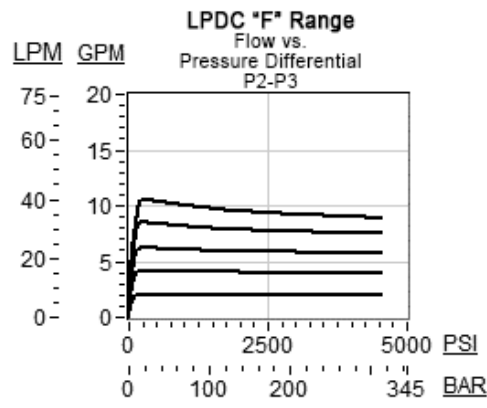
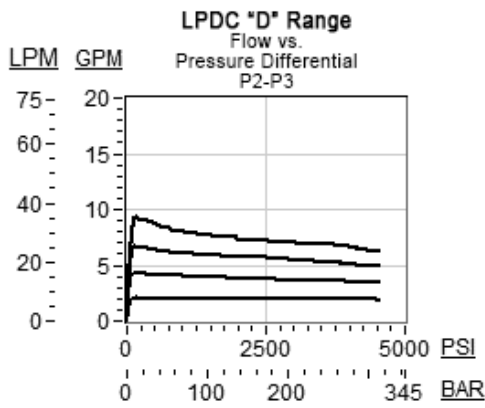
Model Code Example: LPDCXHN

CONTROL	(X) DIFFERENTIAL PRESSURE	(H) SEAL MATERIAL	(N) MATERIAL/COATING
X Not Adjustable	H 200 psi (14 bar)	N Buna-N	Standard Material/Coating
	D 50 psi (3,5 bar)	E EPDM	/AP Stainless Steel, Passivated
	F 100 psi (7 bar)	V Viton	/LH Mild Steel, Zinc-Nickel
	G 150 psi (10,5 bar)		

TECHNICAL FEATURES

- If a higher compensating pressure is needed consider using a direct-acting reducer; PR*R.
- Cartridges configured with EPDM seals are for use in systems with phosphate ester fluids. Exposure to petroleum based fluids, greases and lubricants will damage the seals.
- All ports will accept 5000 psi (350 bar).
- Corrosion resistant cartridge valves are intended for use in corrosive environments and are identified by the model code suffix /AP for external stainless steel components, or /LH for external zinc-nickel plated components. See the CONFIGURATION section for all options. For further details, please see the Materials of Construction page located under TECH RESOURCES.
- Incorporates the Sun floating style construction to minimize the possibility of internal parts binding due to excessive installation torque and/or cavity/cartridge machining variations.

PERFORMANCE CURVES



RELATED MODELS

- [LPDCL](#) Tuneable, normally open, modulating element