

TECHNICAL DATA

Body Type	Line mount
Interface	None
Body Features	Cross port with shuttle on port 3s
Includes integral cartridge(s)	Yes (see Included Components)
Mounting Hole Diameter	.41 in.
Mounting Hole Depth	Through
Mounting Hole Quantity	2
Open Cavities	2
Cavity	T-2A
Port Size	SAE 12
Model Weight	6.09 lb.

NOTES *Important:* Carefully consider the maximum system pressure. The pressure rating of the manifold is dependent on the manifold material, with the port type/size a secondary consideration. Manifolds constructed of aluminum are not rated for pressures higher than 3000 psi (210 bar), regardless of the port type/size specified.

PORT DESIGNATORS

Modifiers	Ports
XBL, /10, /11, /15, /16, /S, /S3, /V, /Y, /Y3	Ports 1 & 2: SAE 12; Port V: SAE 6; Gage Ports: 1/4" NPTF;

INCLUDED COMPONENTS

Part	Description	Quantity
CSABXXN	Cartridge	1

CONFIGURATION OPTIONS

Model Code Example: XBL

MODIFIER

6061-T651 Aluminum, Buna-N

/11 6061-T651 Aluminum, Buna-N, Clear Anodize - Per MIL SPEC 8625F Type II, Class I

/10 6061-T651 Aluminum, Buna-N, Black Anodize - Per MIL SPEC 8625F Type II, Class II

/V 6061-T651 Aluminum, Viton

/16 6061-T651 Aluminum, Viton, Clear Anodize - Per MIL SPEC 8625F Type II, Class I

/15 6061-T651 Aluminum, Viton, Black Anodize - Per MIL SPEC 8625F Type II, Class II

/S 65-45-12 Ductile Iron, Buna-N, Chem. Black

/S3 65-45-12 Ductile Iron, Buna-N, Trivalent Clear Zinc with Top Sealer

/Y 65-45-12 Ductile Iron, Viton, Chem. Black

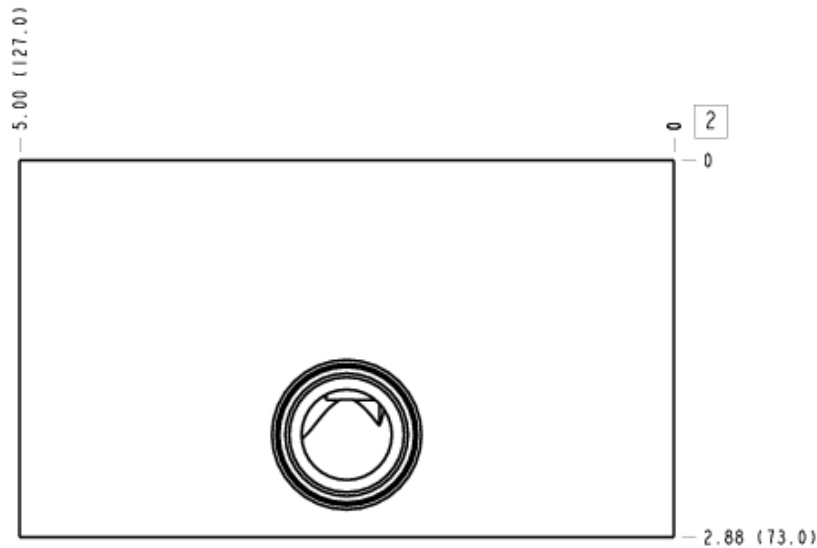
/Y3 65-45-12 Ductile Iron, Viton, Trivalent Clear Zinc with Top Sealer

MANIFOLD FACES

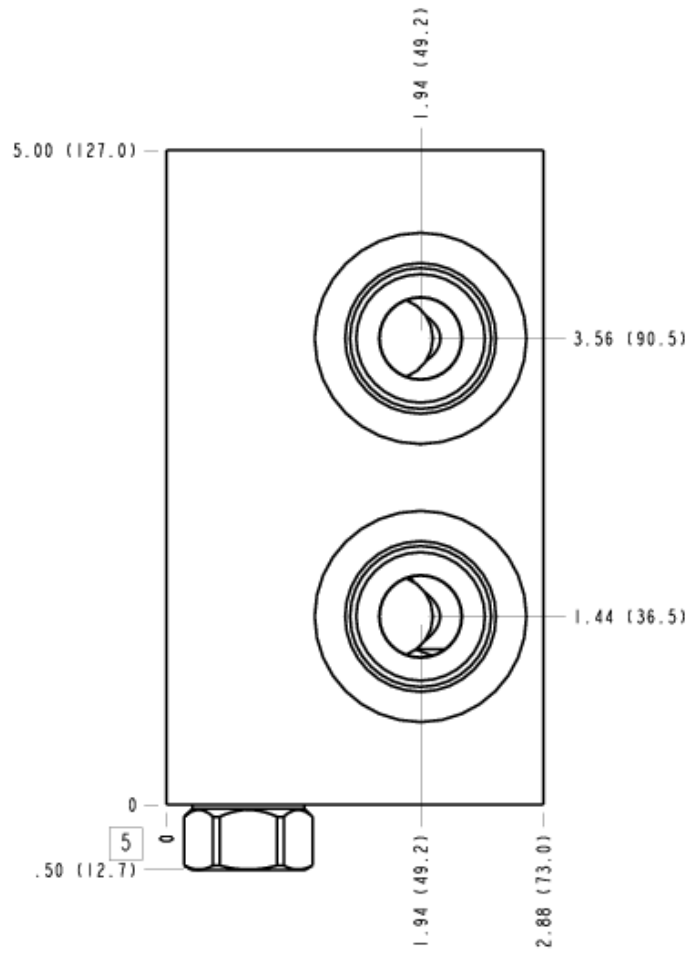
FACE GRID

1	2	3	4
5	6	7	8
9	10	11	12

Face 2



Face 5



Face 6

