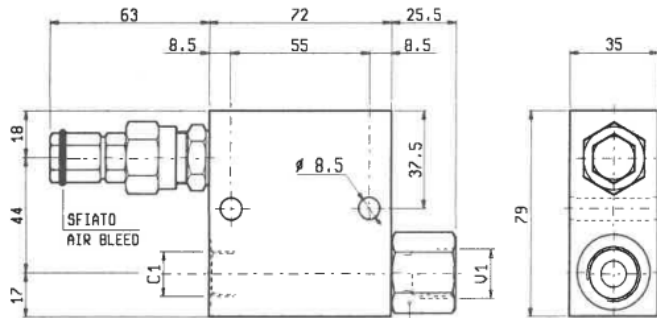


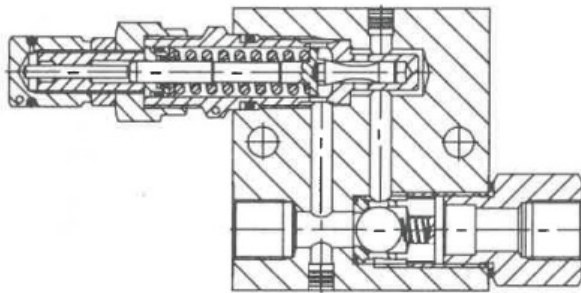
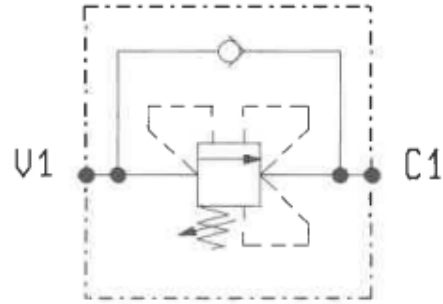


# VSQ-CC-30 05.21.11 X-Y-Z

SEQUENZA, DIRETTE, OTTURATORE CONICO, COMPENSATE,  
DIRECT, POPPET TYPE, SELF COMPENSATED SEQUENCE



SOLO/ONLY 05.21.11.X.02.2



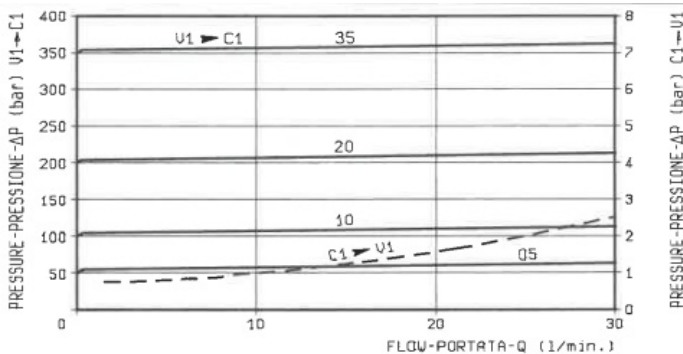
## DATI TECNICI / TECHNICAL DATA

Pressione di lavoro max.  
Max. working pressure 350 bar

Portata max.  
Flow max. 30 l/min

Peso  
Weight 0.81 kg

Funzionamento corretto con pressione sul circuito secondario non inferiore a 20 bar.  
For good performance, the pressure in the secondary circuit should not drop below 20 bar.



Z	MOLLE / SPRINGS				
	Campo taratura min - max bar Adj. press. range bar	Incremento press. bar / giro vite Press. increase bar / turn	Taratura standard bar (Q = 5 l/min) Std. setting bar (Q = 5 l/min)	Cod. ordinazione Ordering code	Colore Colour
05	5-50	11.5	50	03.51.01.077	nero black
10	30-100	23.5	100	03.51.01.076	blu blue
20	50-210	47	200	03.51.01.075	verde green
35	100-350	82	350	03.51.01.059	giallo yellow

X	REGOLAZIONI ADJUSTMENTS	
03	vite interna esagono incassato leakproof inner hex. socket screw	
	cappello per piombatura sealing cap codice / ordering code 03.05.01.002	

Y	ATTACCHI / PORT SIZE	
	V1-C1	
02	G 3/8	
03	G 1/2	