

CONFIGURATION

X	Control	Not Adjustable
H	Differential Pressure	200 psi (14 bar)
N	Seal Material	Buna-N
(none)	Material/Coating	Standard Material/Coating

Normally open modulating elements without an internal orifice act as a restrictive compensator to maintain a constant pressure drop across an orifice, regardless of variations in upstream or downstream pressure.

TECHNICAL DATA

NOTE: DATA MAY VARY BY CONFIGURATION. SEE CONFIGURATION SECTION.

Cavity	T-17A
Series	3
Capacity	240 L/min.
Maximum Operating Pressure	350 bar
Valve Hex Size	31,8 mm
Valve Installation Torque	203 - 217 Nm
Seal kit - Cartridge	Buna: 990017007
Seal kit - Cartridge	EPDM: 990017014
Seal kit - Cartridge	Polyurethane: 990017002
Seal kit - Cartridge	Viton: 990017006
Model Weight	0.50 kg.

CONFIGURATION OPTIONS

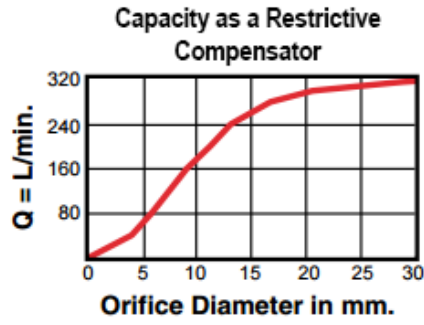
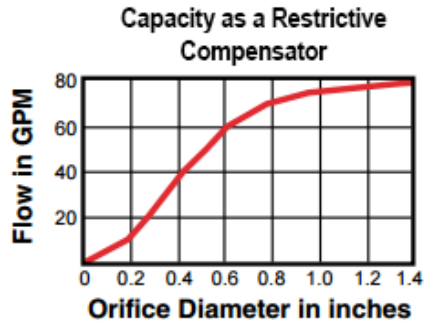
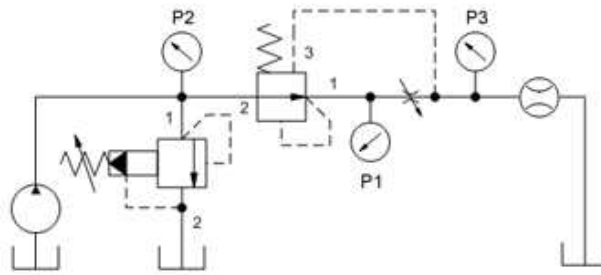
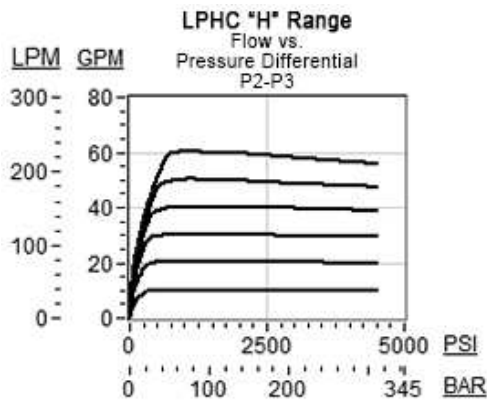
Model Code Example: LPHCXHN

CONTROL	(X) DIFFERENTIAL PRESSURE	(H) SEAL MATERIAL	(N) MATERIAL/COATING
X Not Adjustable	H 200 psi (14 bar) D 50 psi (3,5 bar) F 100 psi (7 bar) G 150 psi (10,5 bar)	N Buna-N E EPDM V Viton	Standard Material/Coating /AP Stainless Steel, Passivated /LH Mild Steel, Zinc-Nickel

TECHNICAL FEATURES

- If a higher compensating pressure is needed consider using a direct-acting reducer; PR*R.
- Cartridges configured with EPDM seals are for use in systems with phosphate ester fluids. Exposure to petroleum based fluids, greases and lubricants will damage the seals.
- All ports will accept 5000 psi (350 bar).
- Corrosion resistant cartridge valves are intended for use in corrosive environments and are identified by the model code suffix /AP for external stainless steel components, or /LH for external zinc-nickel plated components. See the CONFIGURATION section for all options. For further details, please see the Materials of Construction page located under TECH RESOURCES.
- Incorporates the Sun floating style construction to minimize the possibility of internal parts binding due to excessive installation torque and/or cavity/cartridge machining variations.

PERFORMANCE CURVES



RELATED MODELS

- [LPHCL](#) Tuneable, normally open, modulating element