

### TECHNICAL DATA

Body Type	Line mount
Interface	None
Body Features	Inline
Mounting Hole Diameter	10,7 mm
Mounting Hole Depth	Through
Mounting Hole Quantity	1
Open Cavities	1
Cavity	T-5A
Port Size	3/8" BSPP
Model Weight	0.27 kg.

### NOTES

**Important:** Carefully consider the maximum system pressure. The pressure rating of the manifold is dependent on the manifold material, with the port type/size a secondary consideration. Manifolds constructed of aluminum are not rated for pressures higher than 3000 psi (210 bar), regardless of the port type/size specified.

### PORT DESIGNATORS

Modifiers	Ports
DCU, /10, /11	All Ports: 3/8" BSPP;

### CONFIGURATION OPTIONS

#### Model Code Example: DCU

#### MODIFIER

- 6061-T651 Aluminum, Buna-N**
- /11 6061-T651 Aluminum, Buna-N, Clear Anodize - Per MIL SPEC 8625F Type II, Class I
- /10 6061-T651 Aluminum, Buna-N, Black Anodize - Per MIL SPEC 8625F Type II, Class II
- /S 65-45-12 Ductile Iron, Buna-N, Chem. Black
- /S3 65-45-12 Ductile Iron, Buna-N, Trivalent Clear Zinc with Top Sealer

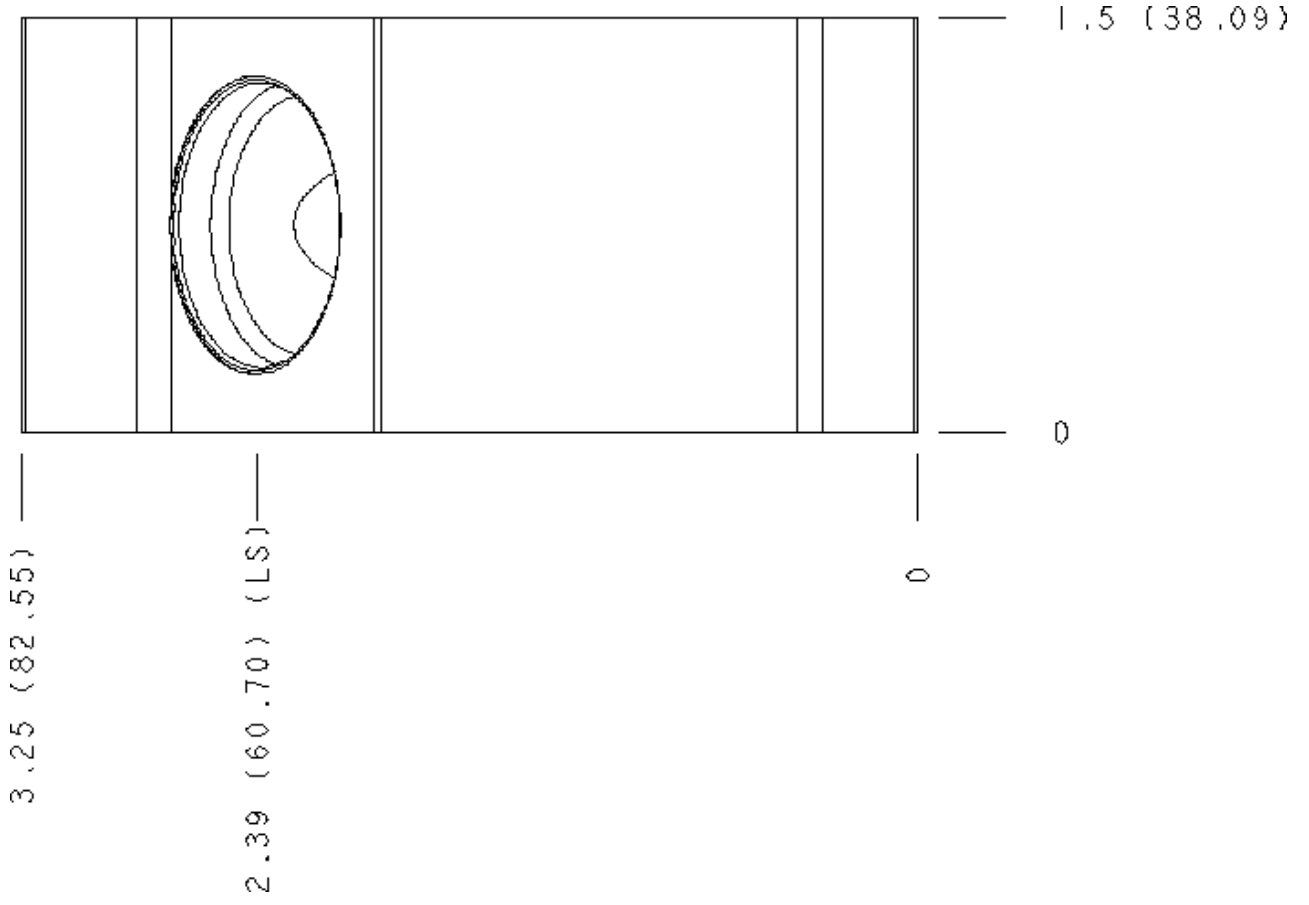
### MANIFOLD FACES

#### FACE GRID

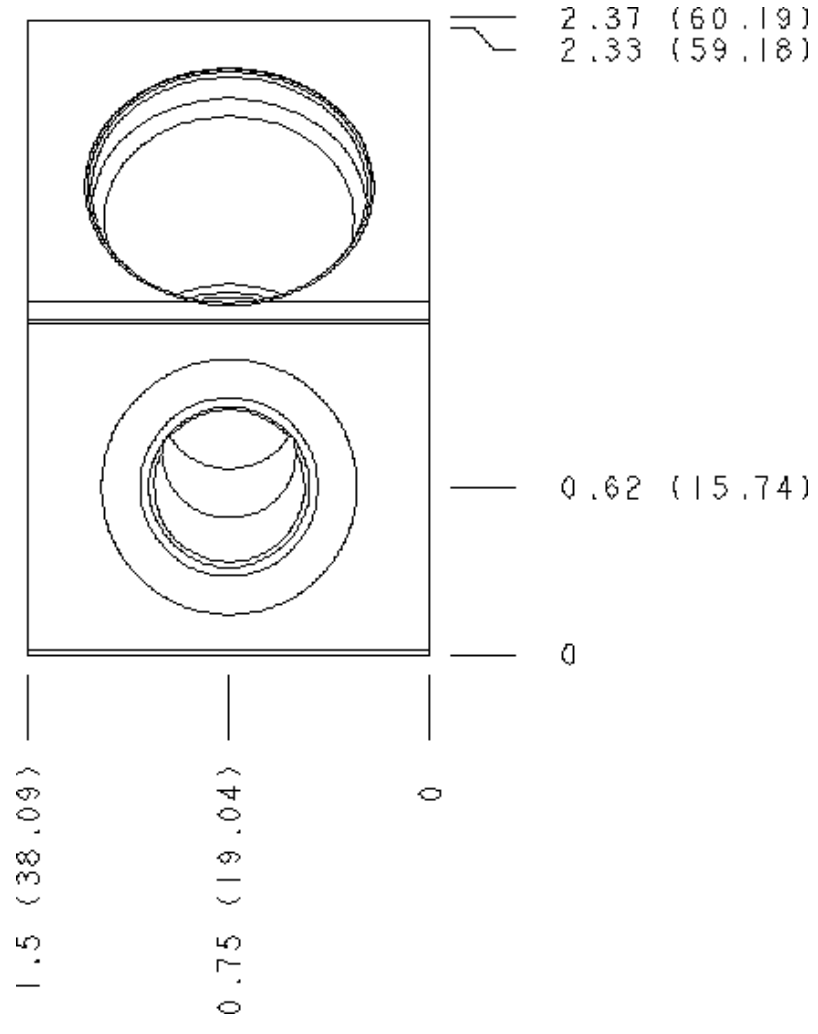


5	6	7	8
9	10	11	12

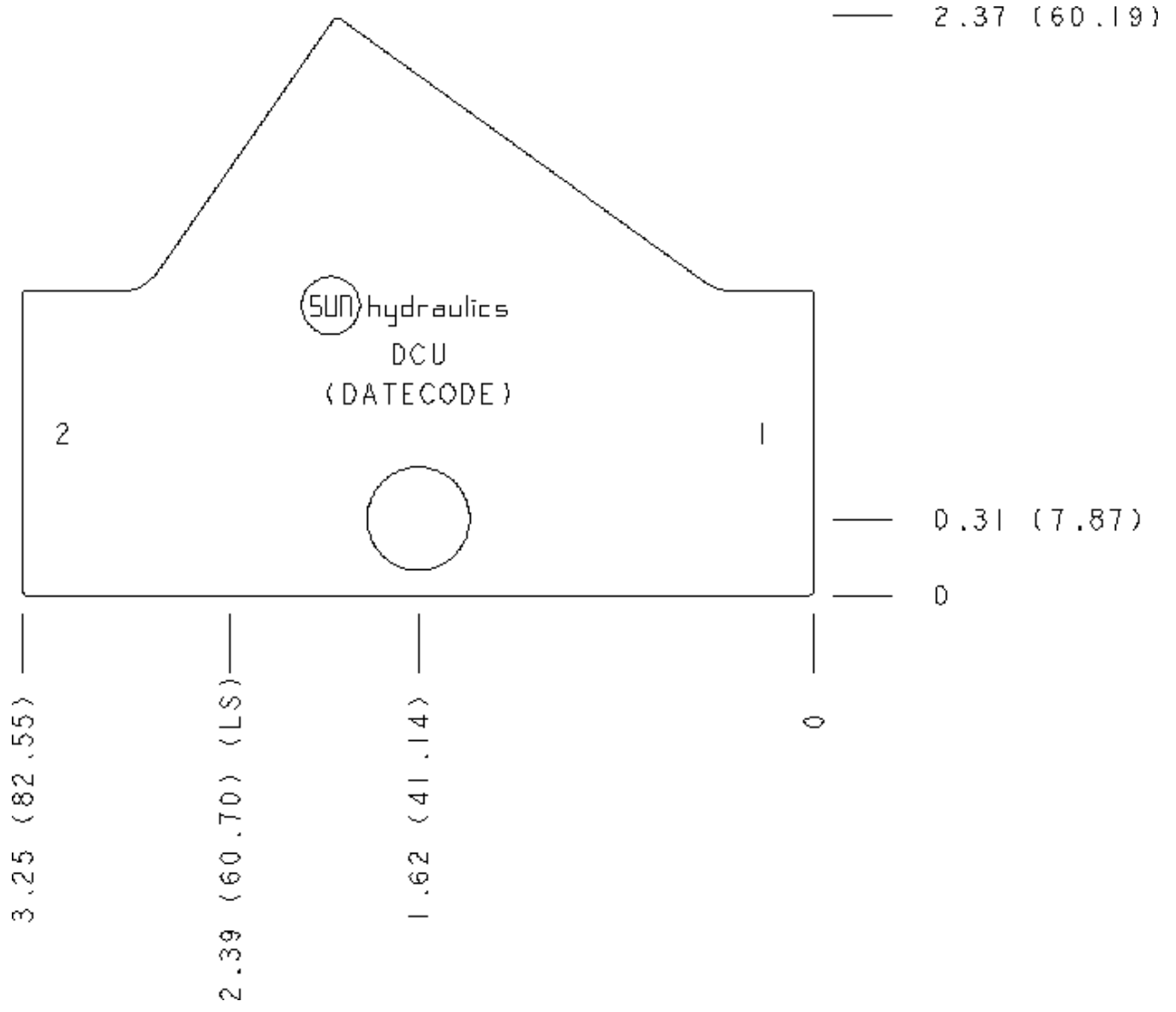
**Face 2**



Face 5



Face 6



**Face 7**

