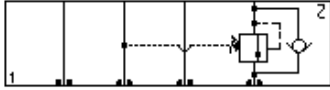
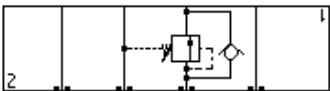


TECHNICAL DATA

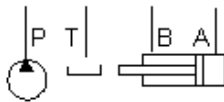
Body Type	Sandwich
Interface	ISO 03
Body Features	Sequence into A or out of B with reverse flow check
Stack Height	44,5 mm
Seal Plate Included (see notes)	Yes
Open Cavities	1
Cavity	T-11A
Model Weight	1.23 kg.



Sequence, In to A with reverse flow check



Sequence, Out of B with reverse flow check



CONFIGURATION

/S Modifier 65-45-12 Ductile Iron, Buna-N, Chem. Black

NOTES

Important: Carefully consider the maximum system pressure. The pressure rating of the manifold is dependent on the manifold material, with the port type/size a secondary consideration. Manifolds constructed of aluminum are not rated for pressures higher than 3000 psi (210 bar), regardless of the port type/size specified.

INCLUDED COMPONENTS

Part	Description	Quantity
500-001-012	O-Ring	4
700-002	Seal Plate	1
811-001-006	Pin	1
850-004-250	Plug	2
CXCDXAN	Cartridge	1

CONFIGURATION OPTIONS

Model Code Example: EB4/S

MODIFIER (S)

- /S** 65-45-12 Ductile Iron, Buna-N, Chem. Black
- 6061-T651 Aluminum, Buna-N
- /11** 6061-T651 Aluminum, Buna-N, Clear Anodize - Per MIL SPEC 8625F Type II, Class I
- /10** 6061-T651 Aluminum, Buna-N, Black Anodize - Per MIL SPEC 8625F Type II, Class II
- /V** 6061-T651 Aluminum, Viton
- /16** 6061-T651 Aluminum, Viton, Clear Anodize - Per MIL SPEC 8625F Type II, Class I
- /15** 6061-T651 Aluminum, Viton, Black Anodize - Per MIL SPEC 8625F Type II, Class II
- /S3** 65-45-12 Ductile Iron, Buna-N, Trivalent Clear Zinc with Top Sealer
- /Y** 65-45-12 Ductile Iron, Viton, Chem. Black
- /Y3** 65-45-12 Ductile Iron, Viton, Trivalent Clear Zinc with Top Sealer