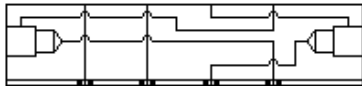
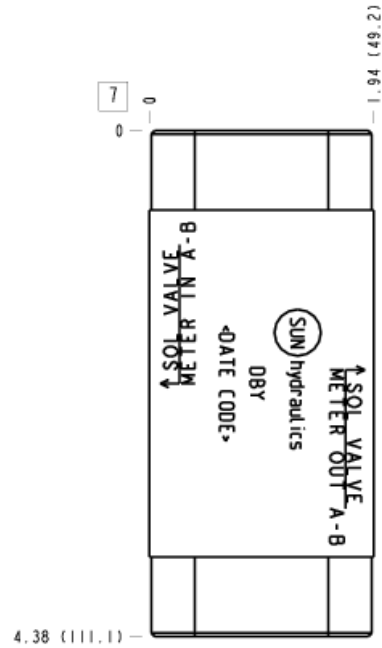
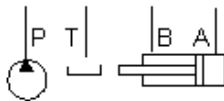


Meter In A and B



Meter Out A and B



### TECHNICAL DATA

Body Type	Sandwich
Interface	ISO 05
Body Features	Flow into workports A and B or out of A and B
Stack Height	50,5 mm
Seal Plate Included (see notes)	Yes
Open Cavities	2
Cavity	T-5A
Model Weight	0.76 kg.

### NOTES

- Stack height value in technical data table includes seal retainer plate.
- Important:** Carefully consider the maximum system pressure. The pressure rating of the manifold is dependent on the manifold material, with the port type/size a secondary consideration. Manifolds constructed of aluminum are not rated for pressures higher than 3000 psi (210 bar), regardless of the port type/size specified.

### INCLUDED COMPONENTS

Part	Description	Quantity
500-001-014	O-Ring	5
700-001	Seal Plate	1

### CONFIGURATION OPTIONS

Model Code Example: DBY

#### MODIFIER

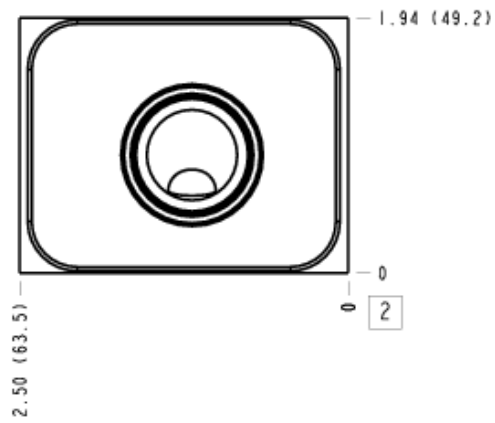
- 6061-T651 Aluminum, Buna-N**
- /11** 6061-T651 Aluminum, Buna-N, Clear Anodize - Per MIL SPEC 8625F Type II, Class I
- /10** 6061-T651 Aluminum, Buna-N, Black Anodize - Per MIL SPEC 8625F Type II, Class II
- /V** 6061-T651 Aluminum, Viton
- /16** 6061-T651 Aluminum, Viton, Clear Anodize - Per MIL SPEC 8625F Type II, Class I
- /15** 6061-T651 Aluminum, Viton, Black Anodize - Per MIL SPEC 8625F Type II, Class II
- /S** 65-45-12 Ductile Iron, Buna-N, Chem. Black
- /S3** 65-45-12 Ductile Iron, Buna-N, Trivalent Clear Zinc with Top Sealer
- /Y** 65-45-12 Ductile Iron, Viton, Chem. Black
- /Y3** 65-45-12 Ductile Iron, Viton, Trivalent Clear Zinc with Top Sealer

# MANIFOLD FACES

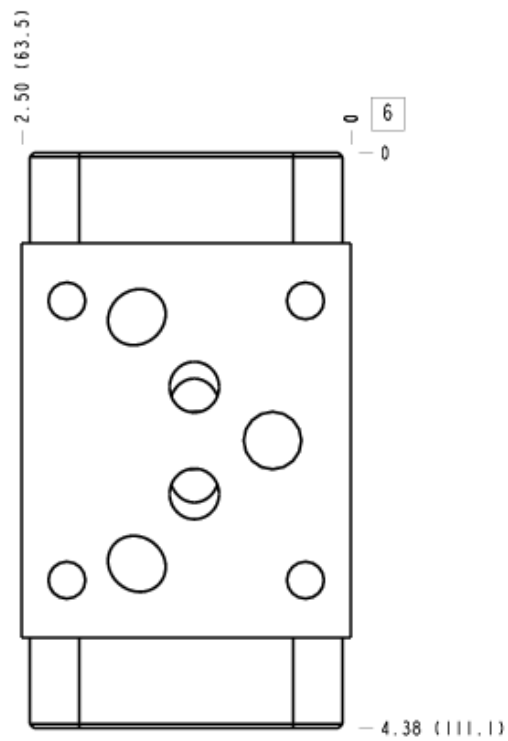
## FACE GRID

1	2	3	4
5	6	7	8
9	10	11	12

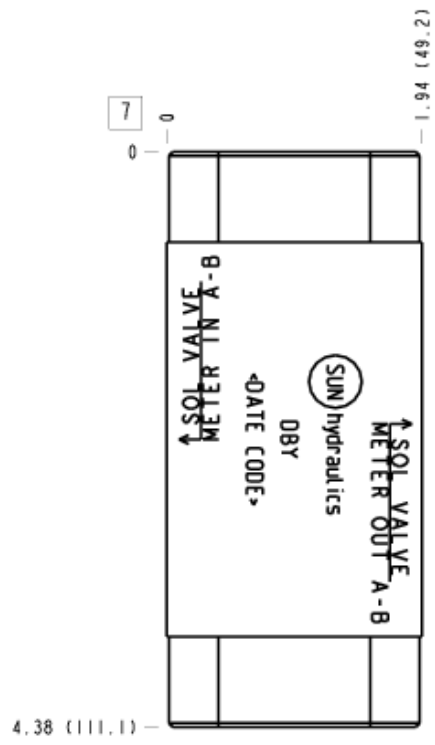
### Face 2



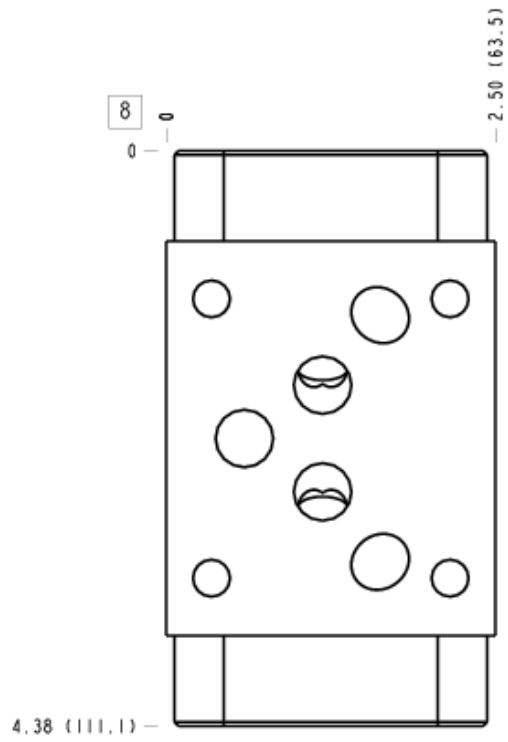
### Face 6



### Face 7



### Face 8



# Face 10

