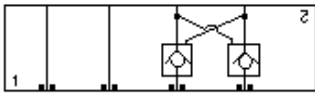
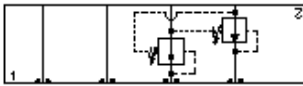


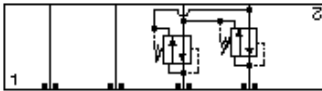
Counterbalance, On A and B, Cross-Piloted



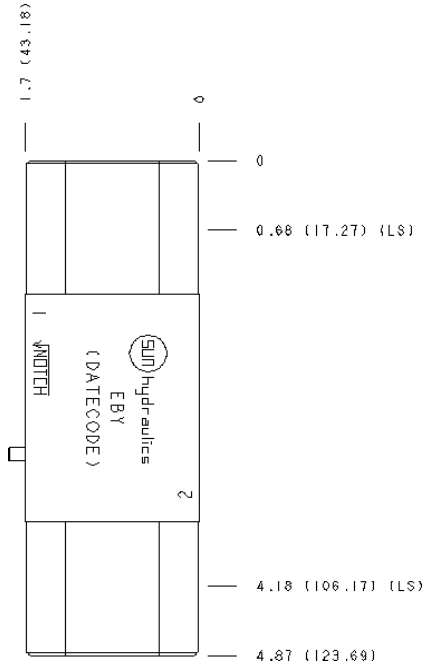
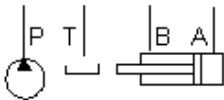
Pilot Operated Check, On A and B, Cross-Piloted



Reducing, On A and B drained to opposite port



Reducing/Relieving, On A and B drain to opposite port



**TECHNICAL DATA**

Body Type	Sandwich
Interface	ISO 03
Body Features	On A and B with cross pilot
Stack Height	44,5 mm
Open Cavities	2
Cavity	T-11A
Model Weight	0.48 kg.

**NOTES**

- Stack height value in technical data table includes seal retainer plate.
- **Important:** Carefully consider the maximum system pressure. The pressure rating of the manifold is dependent on the manifold material, with the port type/size a secondary consideration. Manifolds constructed of aluminum are not rated for pressures higher than 3000 psi (210 bar), regardless of the port type/size specified.

**INCLUDED COMPONENTS**

Part	Description	Quantity
500-001-012	O-Ring	4
700-002	Seal Plate	1
811-001-006	Pin	1
850-004-250	Plug	2

**CONFIGURATION OPTIONS**

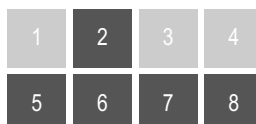
**Model Code Example: EBY**

**MODIFIER**

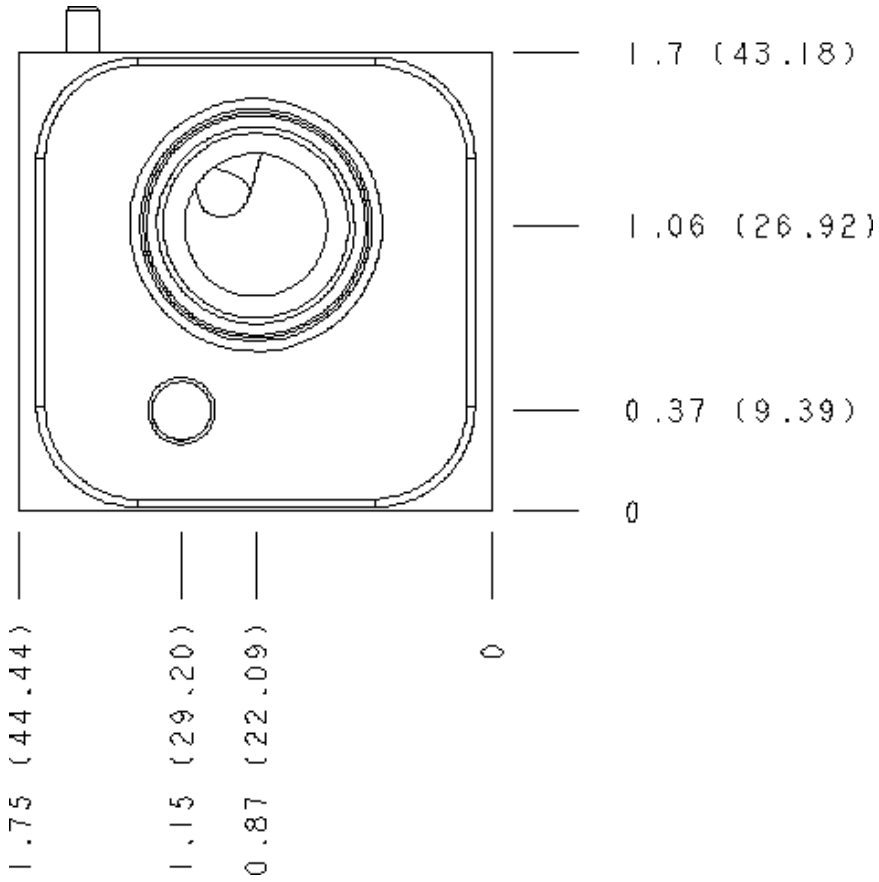
- 6061-T651 Aluminum, Buna-N**
- /S 65-45-12 Ductile Iron, Buna-N, Blackened
- /V 6061-T651 Aluminum, Viton
- /Y 65-45-12 Ductile Iron, Viton, Blackened

**MANIFOLD FACES**

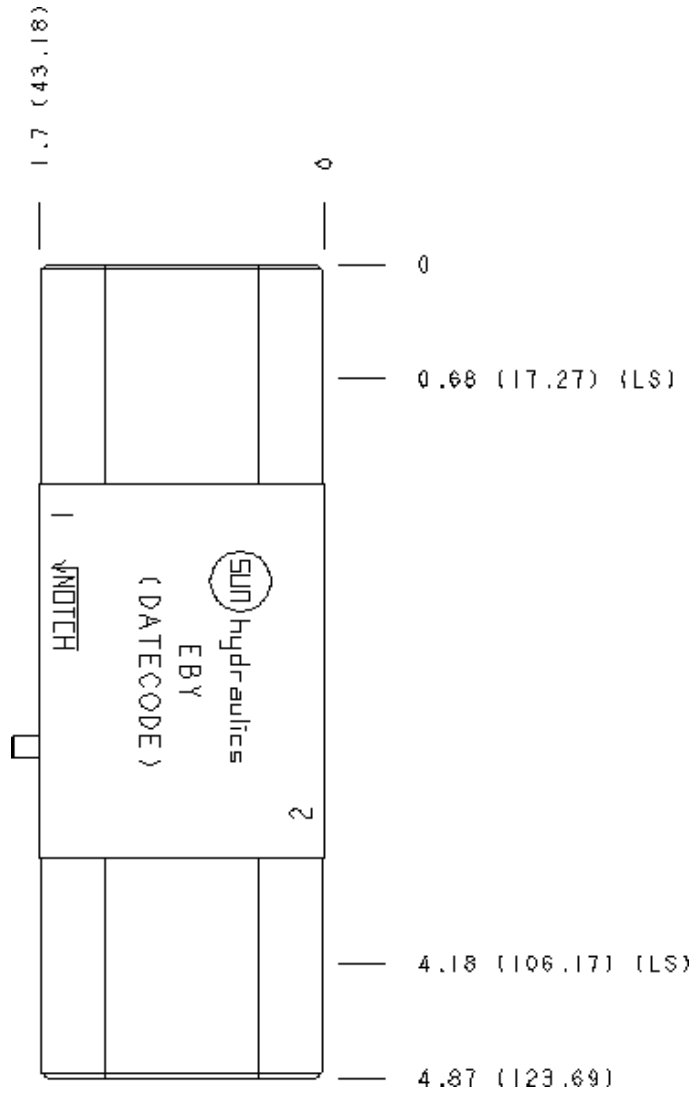
**FACE GRID**



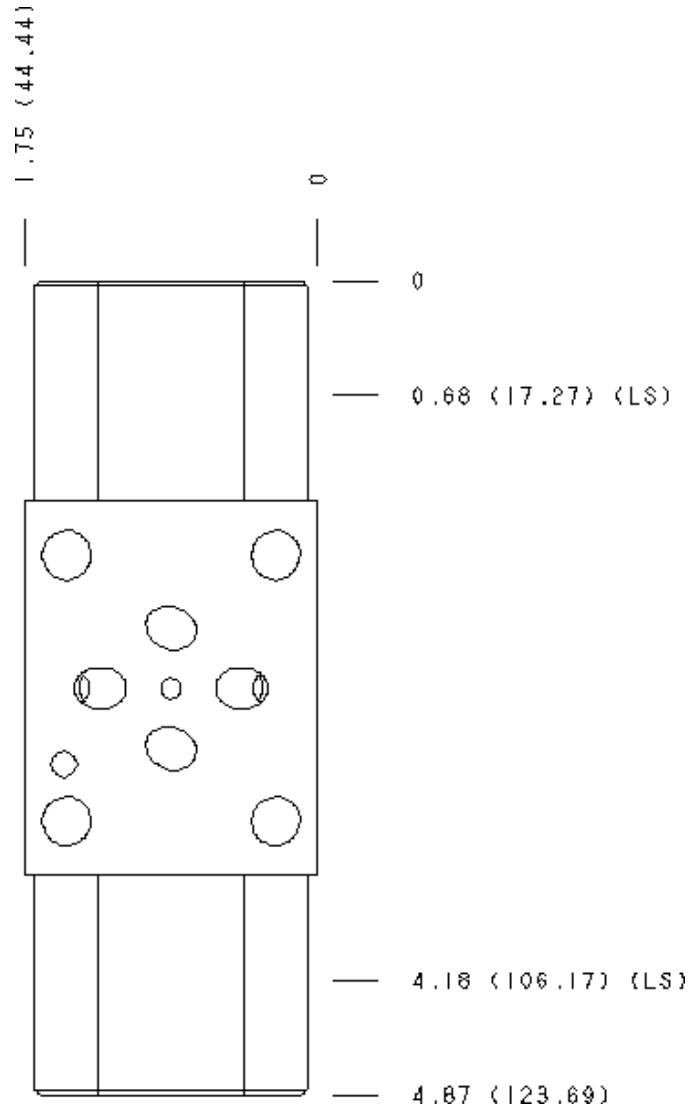
Face 2



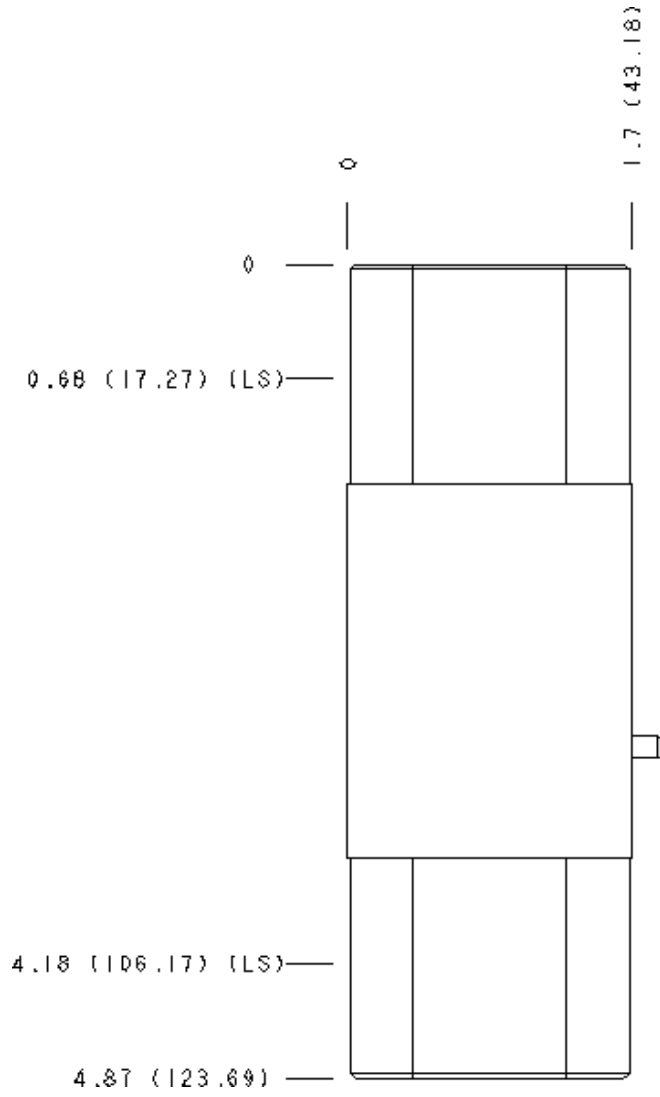
Face 5



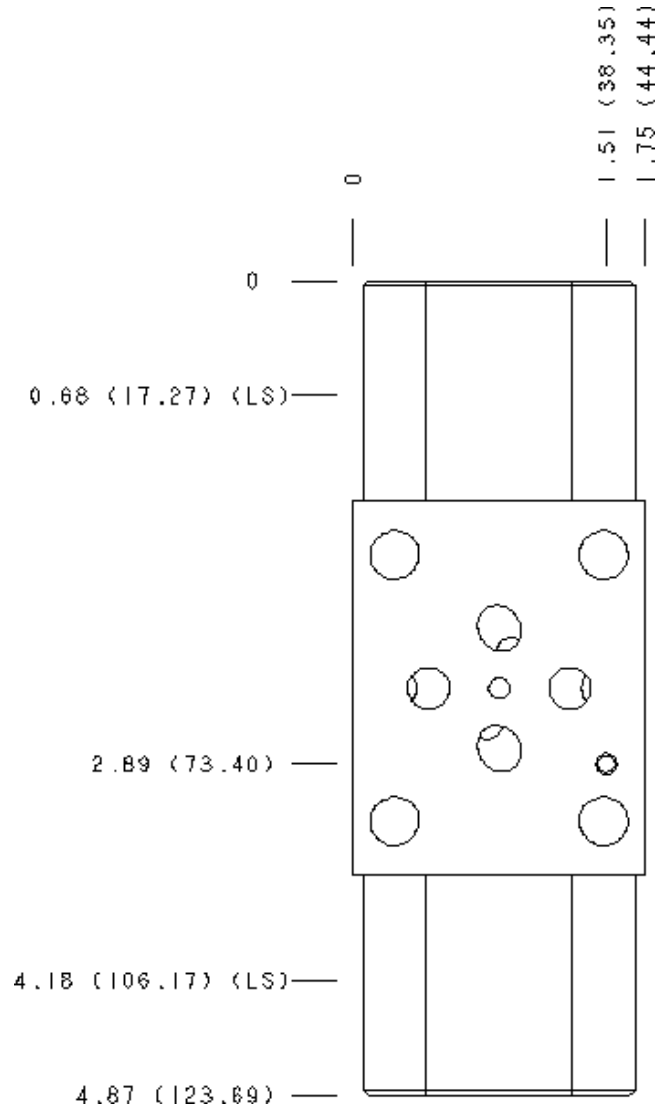
# Face 6



# Face 7



# Face 8



Face 10

