

TECHNICAL DATA

Body Type	Sandwich
Interface	ISO 05
Body Features	Into P and out of T
Stack Height	76 mm
Open Cavities	2
Cavity	T-5A
Model Weight	1.53 kg.

NOTES

Important: Carefully consider the maximum system pressure. The pressure rating of the manifold is dependent on the manifold material, with the port type/size a secondary consideration. Manifolds constructed of aluminum are not rated for pressures higher than 3000 psi (210 bar), regardless of the port type/size specified.

INCLUDED COMPONENTS

Part	Description	Quantity
500-001-014	O-Ring	5
A330-006-006	SAE Plug	1
A330-006-010	SAE Plug	1

CONFIGURATION OPTIONS

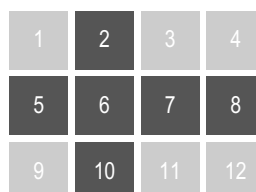
Model Code Example: X9W

MODIFIER

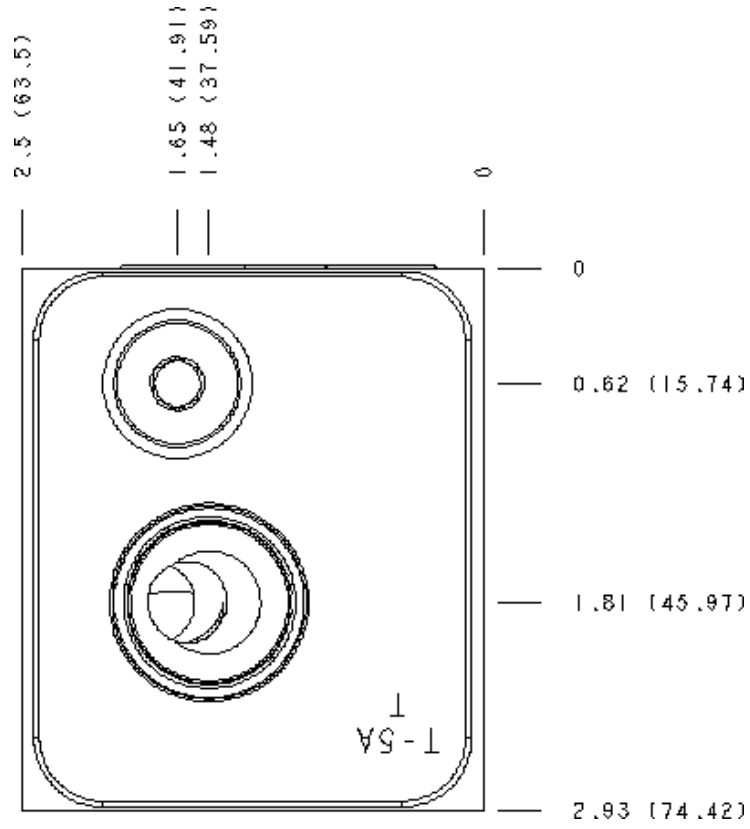
- 6061-T651 Aluminum, Buna-N
- /S 65-45-12 Ductile Iron, Buna-N, Blackened
- /V 6061-T651 Aluminum, Viton
- /Y 65-45-12 Ductile Iron, Viton, Blackened

MANIFOLD FACES

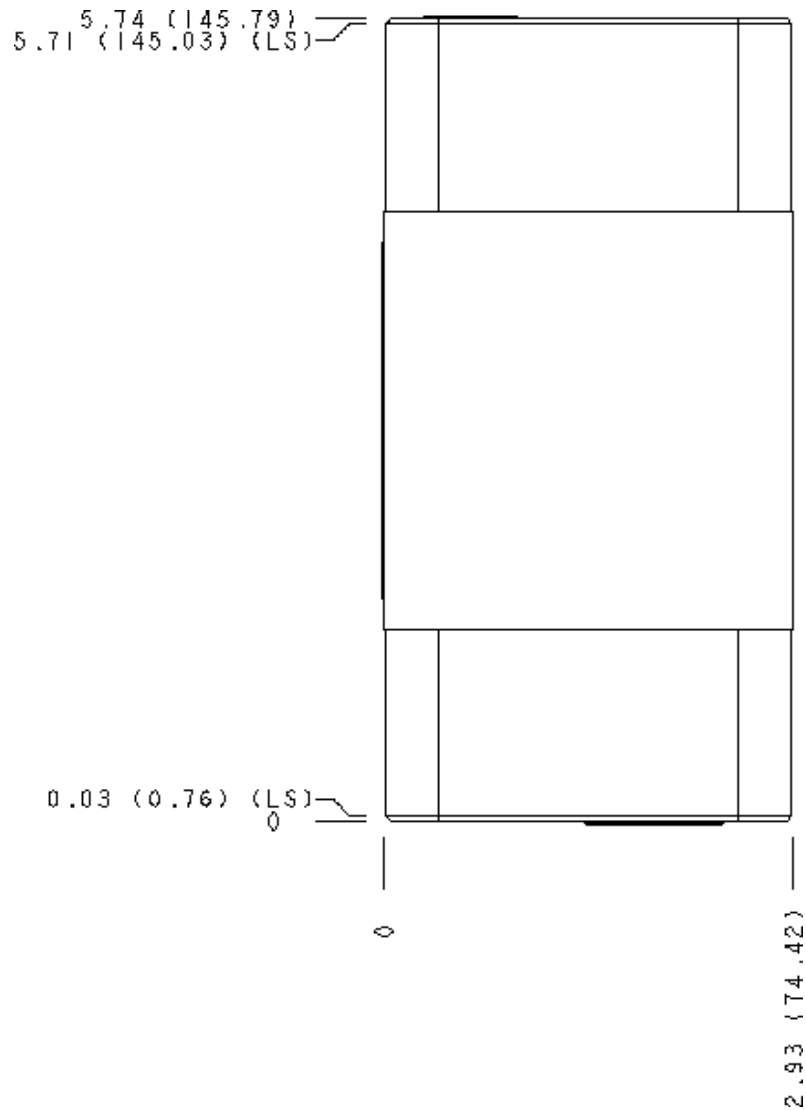
FACE GRID



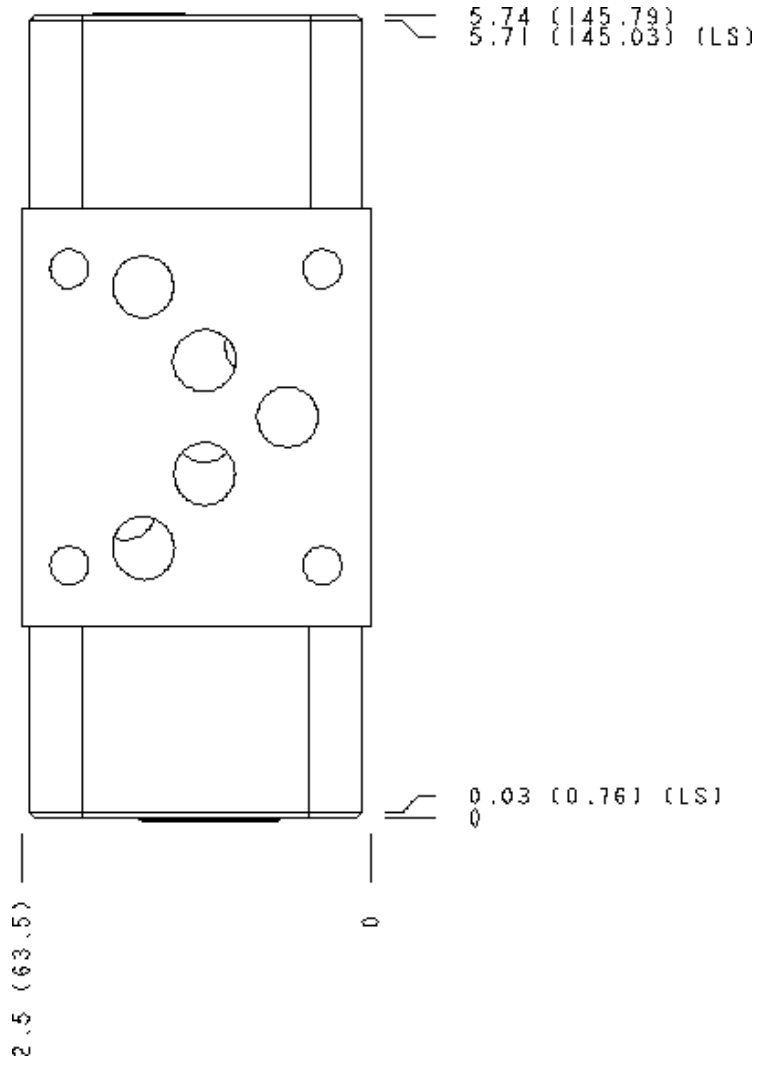
Face 2



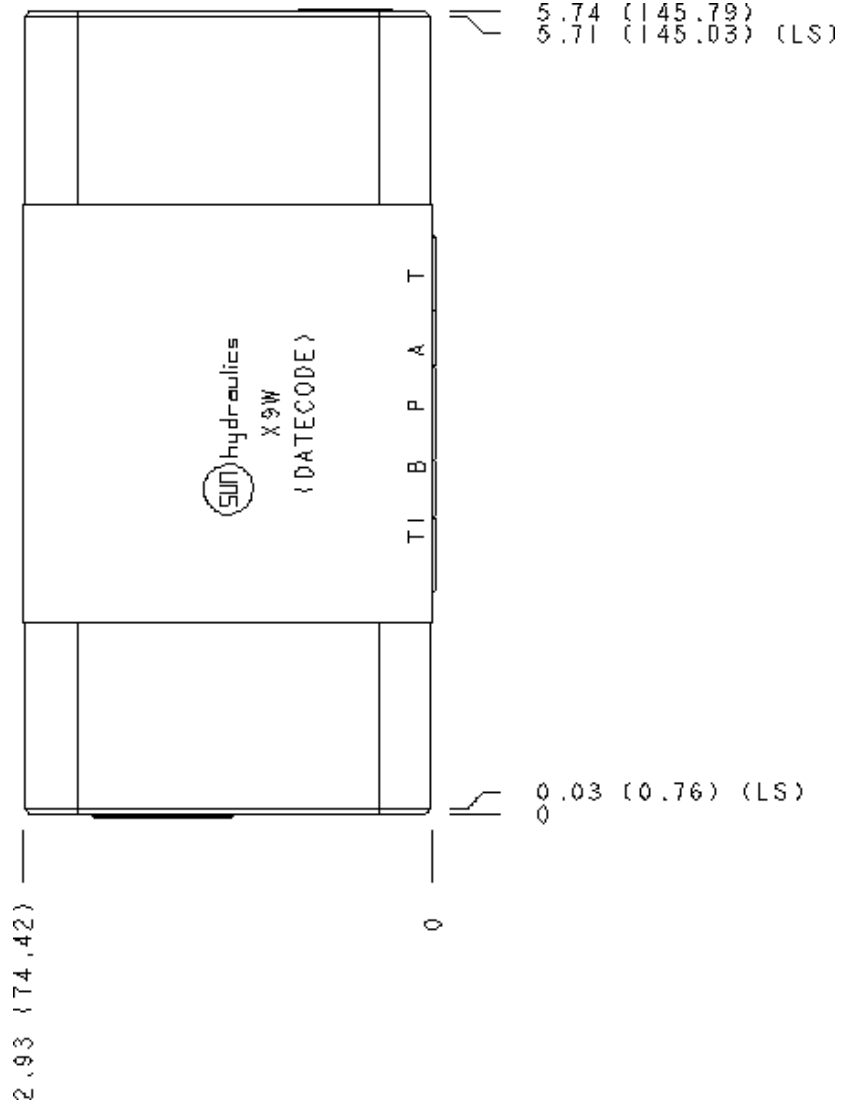
Face 5



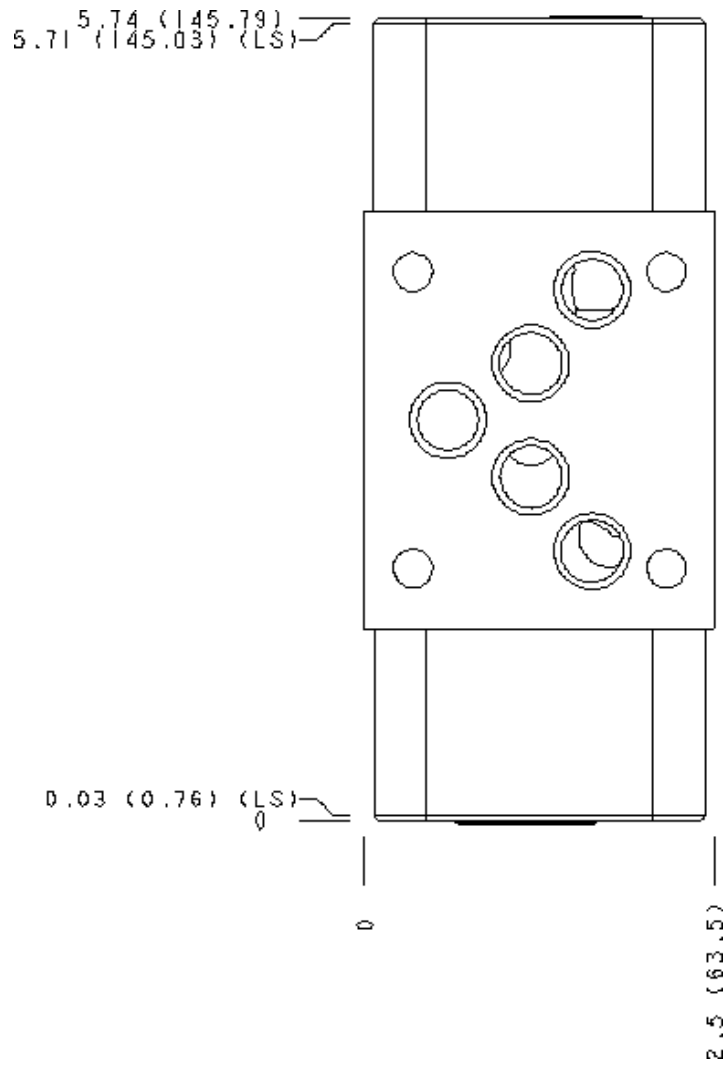
Face 6



Face 7



Face 8



Face 10

