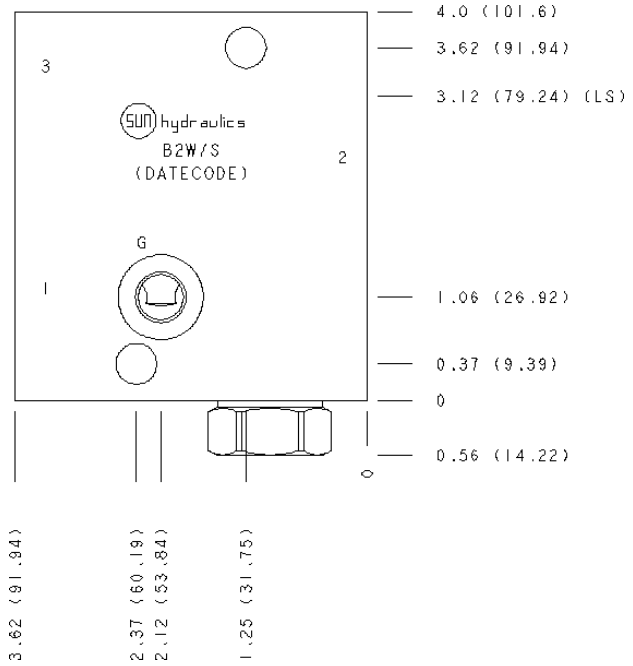


CONFIGURATION

IS Modifier 65-45-12 Ductile Iron, Buna-N, Blackened



TECHNICAL DATA

Body Type	Line mount
Interface	None
Body Features	Ninety degree with reverse flow check - reducing
Mounting Hole Diameter	10,7 mm
Mounting Hole Depth	Through
Mounting Hole Quantity	2
Open Cavities	1
Cavity	T-2A
	3/4" BSPP
Model Weight	1.99 kg.

NOTES

Important: Carefully consider the maximum system pressure. The pressure rating of the manifold is dependent on the manifold material, with the port type/size a secondary consideration. Manifolds constructed of aluminum are not rated for pressures higher than 3000 psi (210 bar), regardless of the port type/size specified.

PORT DESIGNATORS

Modifiers	Ports
B2W, IV	Ports 1 & 2: 3/4" BSPP; Port 3: 1/4" BSPP; Gage Port: 1/4" BSPP;

INCLUDED COMPONENTS

Part	Description	Quantity
CXEDXCN	Cartridge	1

CONFIGURATION OPTIONS
Model Code Example: B2W/S

MODIFIER (IS)

IS 65-45-12 Ductile Iron, Buna-N, Blackened

6061-T651 Aluminum, Buna-N

IV 6061-T651 Aluminum, Viton

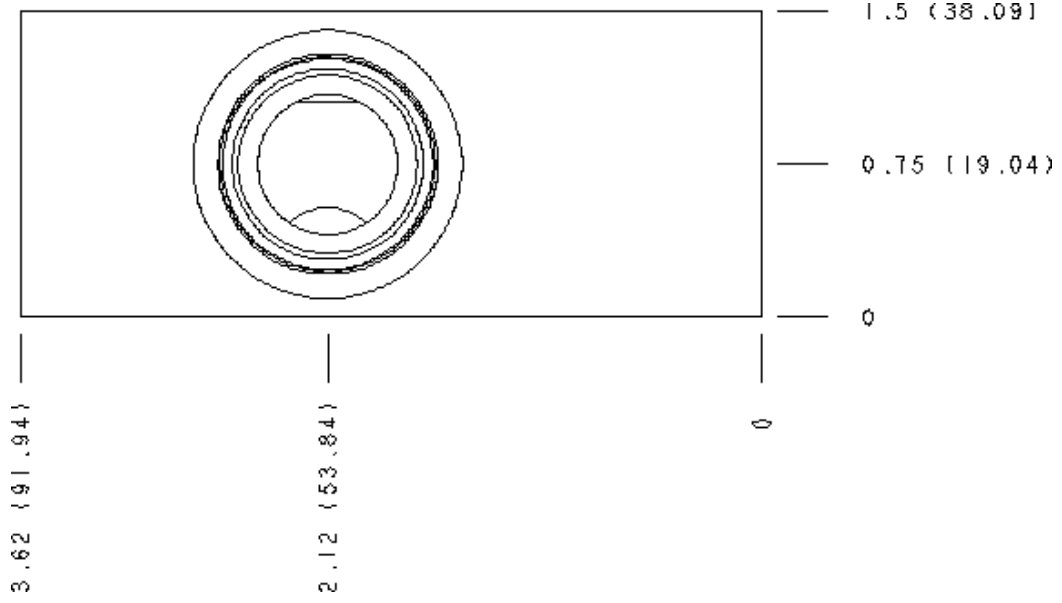
IY 65-45-12 Ductile Iron, Viton, Blackened

MANIFOLD FACES

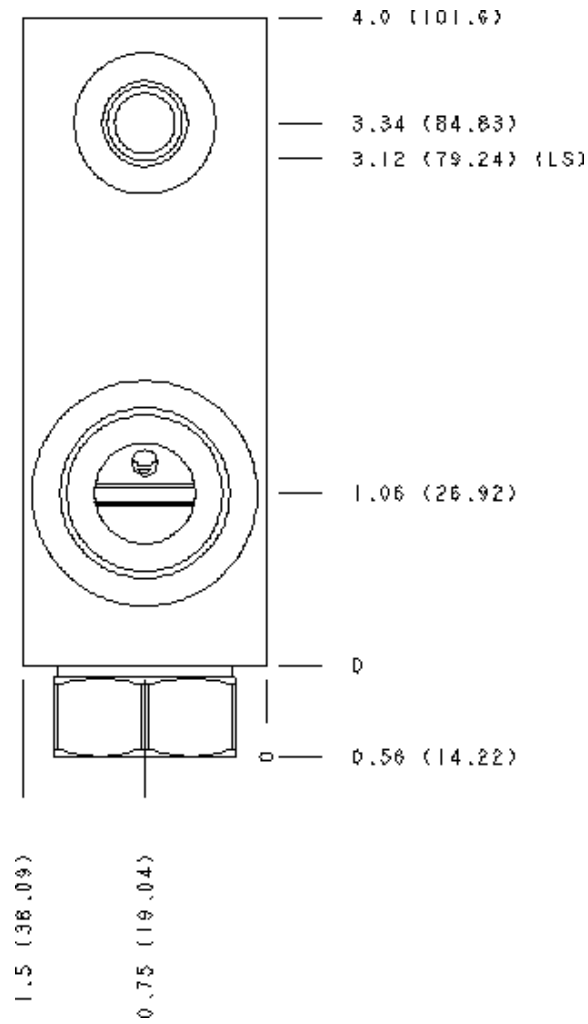
FACE GRID

1	2	3	4
5	6	7	8
9	10	11	12

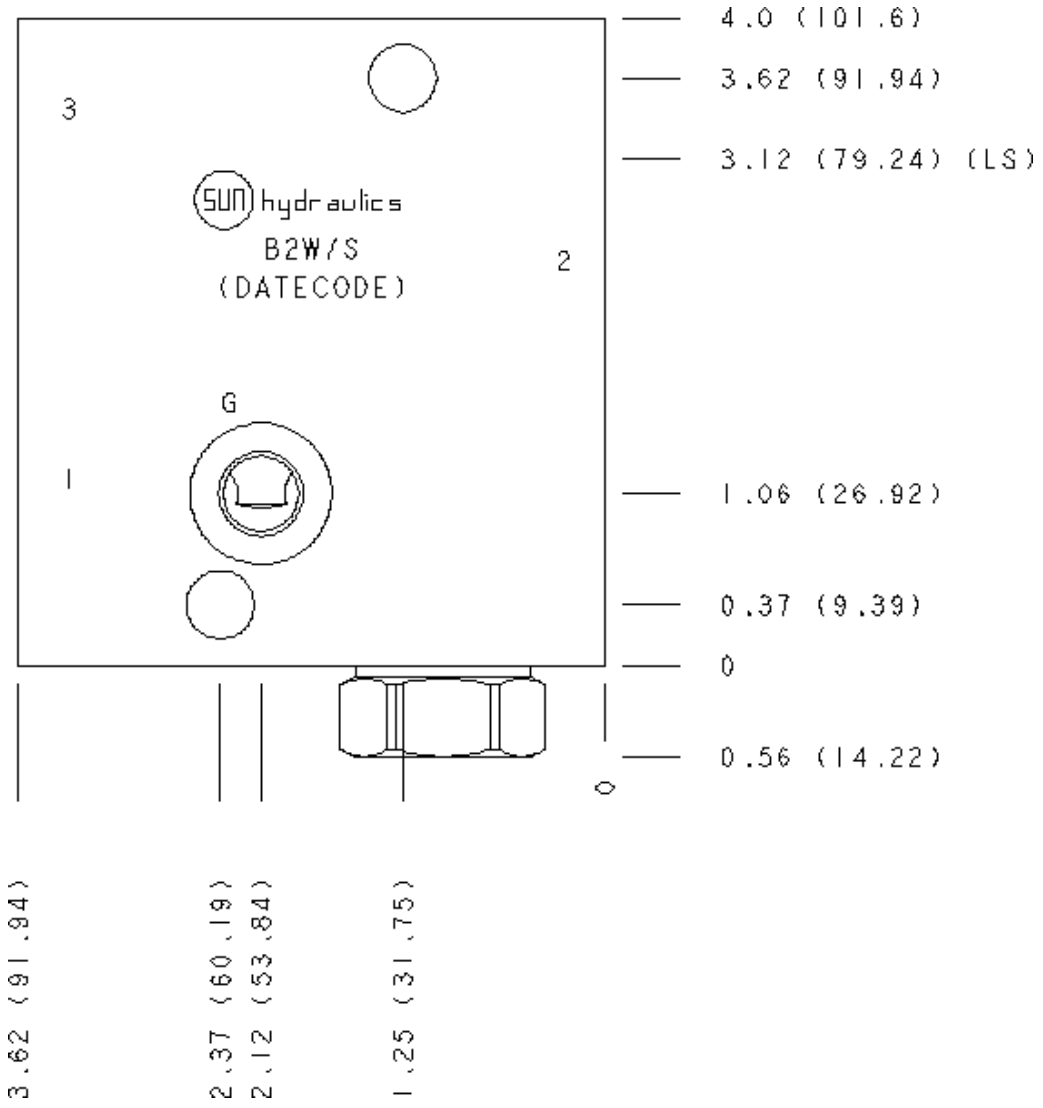
Face 2



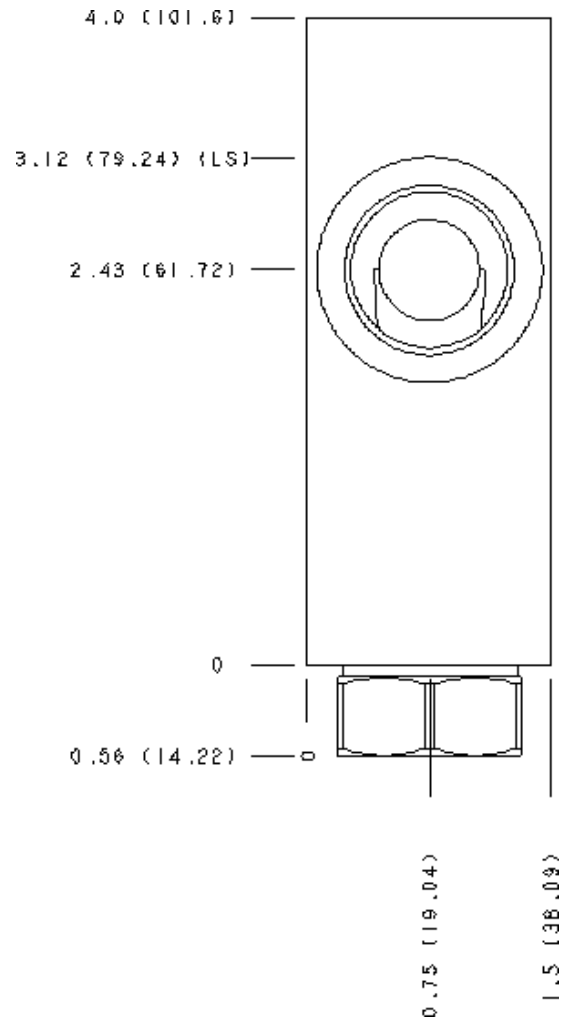
Face 5



Face 6



Face 7



Face 10

