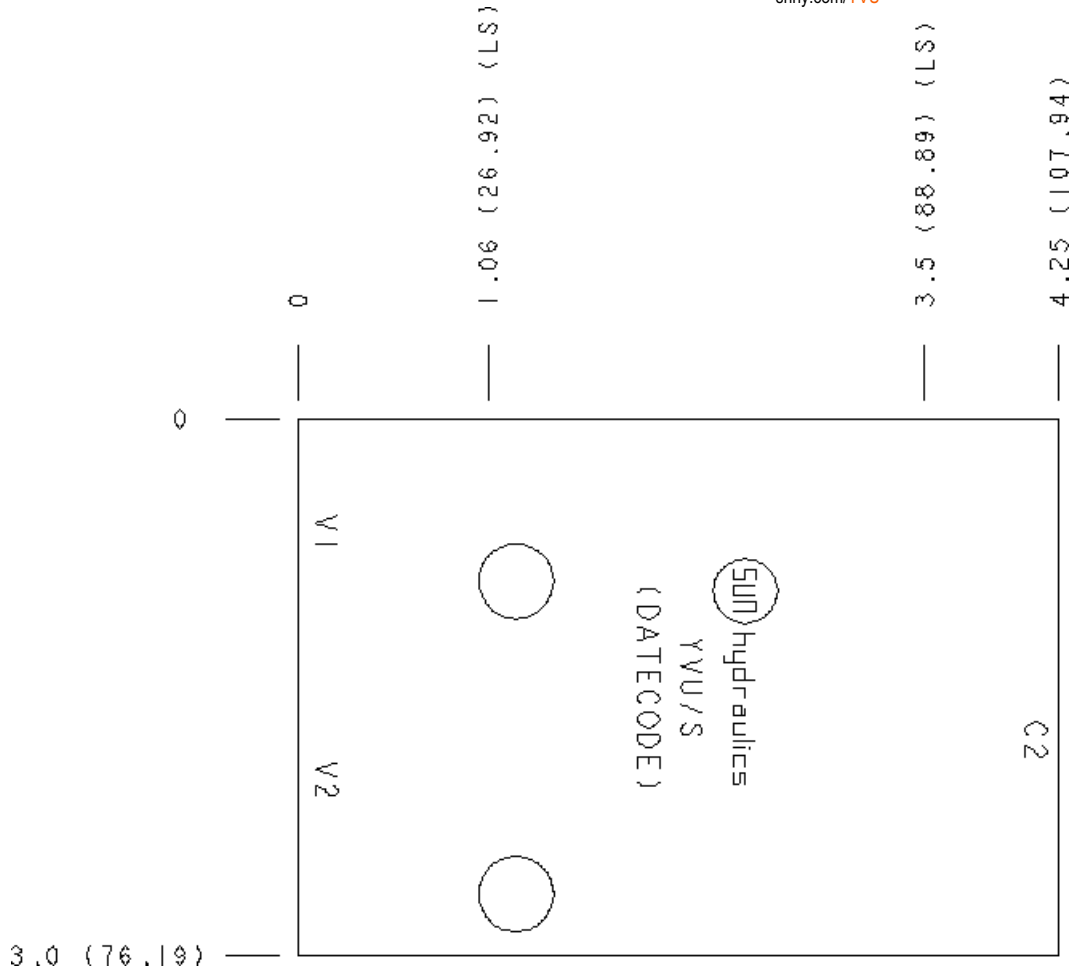


CONFIGURATION

/S Modifier 65-45-12 Ductile Iron, Buna-N, Blackened



TECHNICAL DATA

Body Type	Gasket mount
Interface	Sun
Body Features	Direct mount, cross pilot
Mounting Hole Diameter	10,7 mm
Mounting Hole Depth	Through
Mounting Hole Quantity	2
Open Cavities	2
Cavity	T-2A
Port Size	1/2" BSPP
Model Weight	3.24 kg.

NOTES

Important: Carefully consider the maximum system pressure. The pressure rating of the manifold is dependent on the manifold material, with the port type/size a secondary consideration. Manifolds constructed of aluminum are not rated for pressures higher than 3000 psi (210 bar), regardless of the port type/size specified.

PORT DESIGNATORS

Modifiers	Ports
YVU, /S, /V, /Y	Ports C2, V1, V2: 1/2" BSPP;

INCLUDED COMPONENTS

Part	Description	Quantity
500-001-117	O-Ring	1

CONFIGURATION OPTIONS

Model Code Example: YVU/S

MODIFIER (S)

/S 65-45-12 Ductile Iron, Buna-N, Blackened

6061-T651 Aluminum, Buna-N

/V 6061-T651 Aluminum, Viton

/Y 65-45-12 Ductile Iron, Viton, Blackened

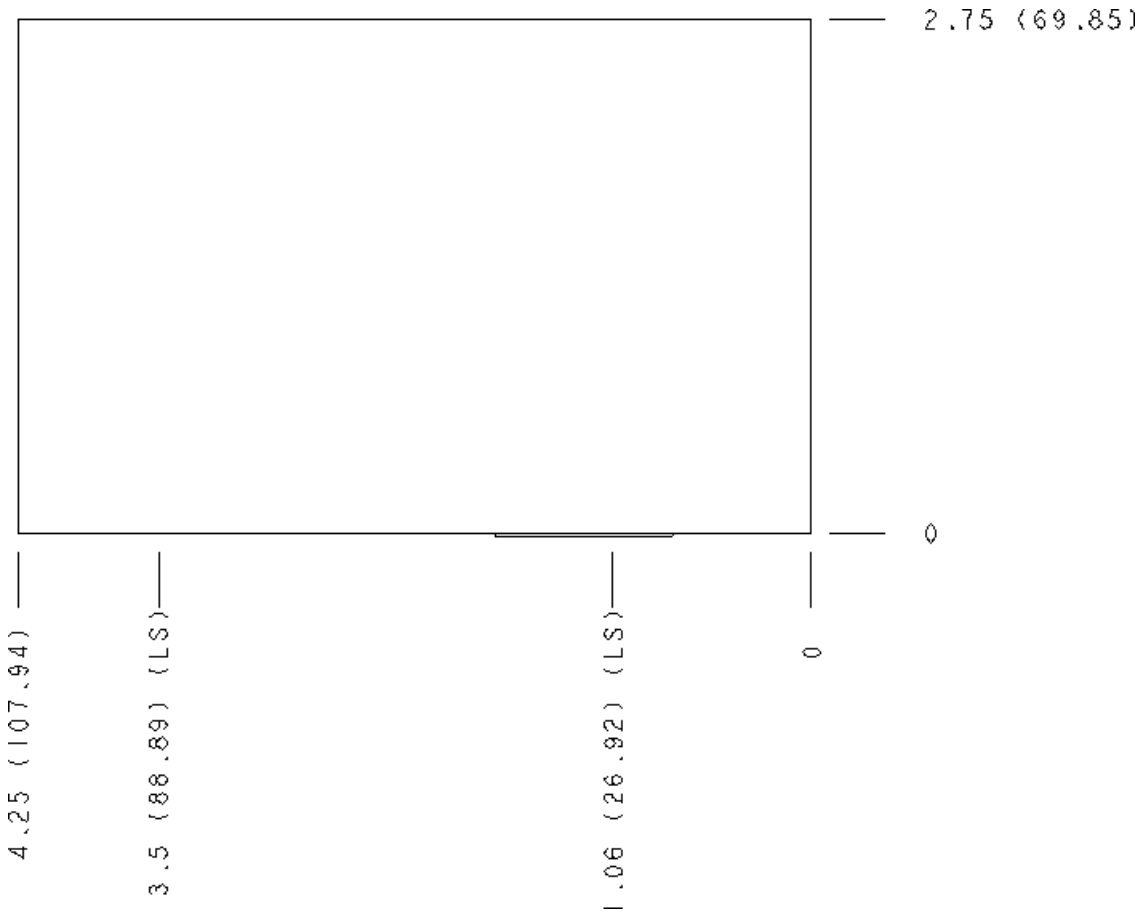
MANIFOLD FACES

FACE GRID

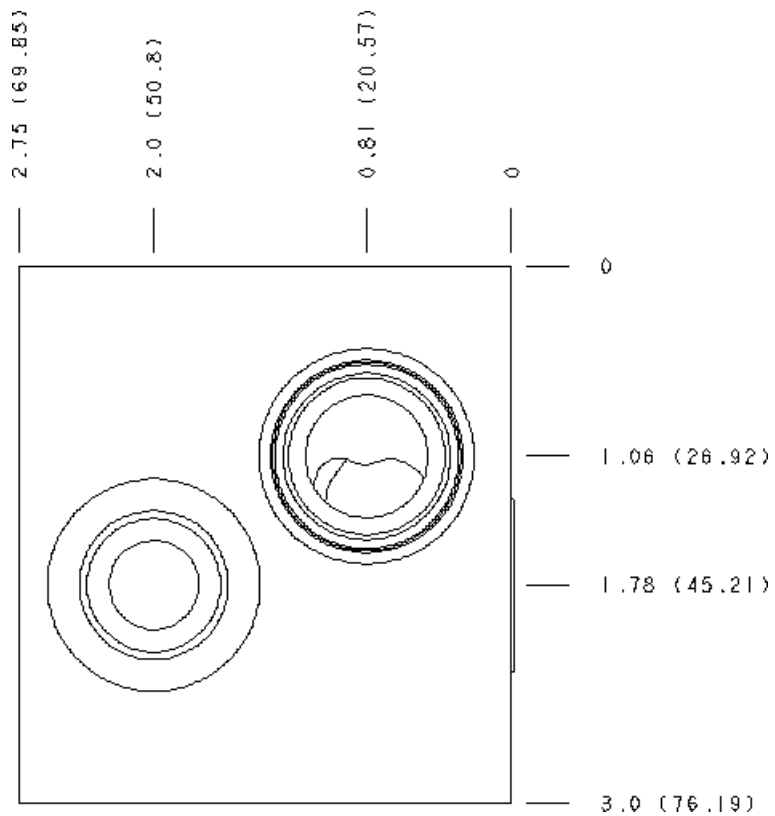


5	6	7	8
9	10	11	12

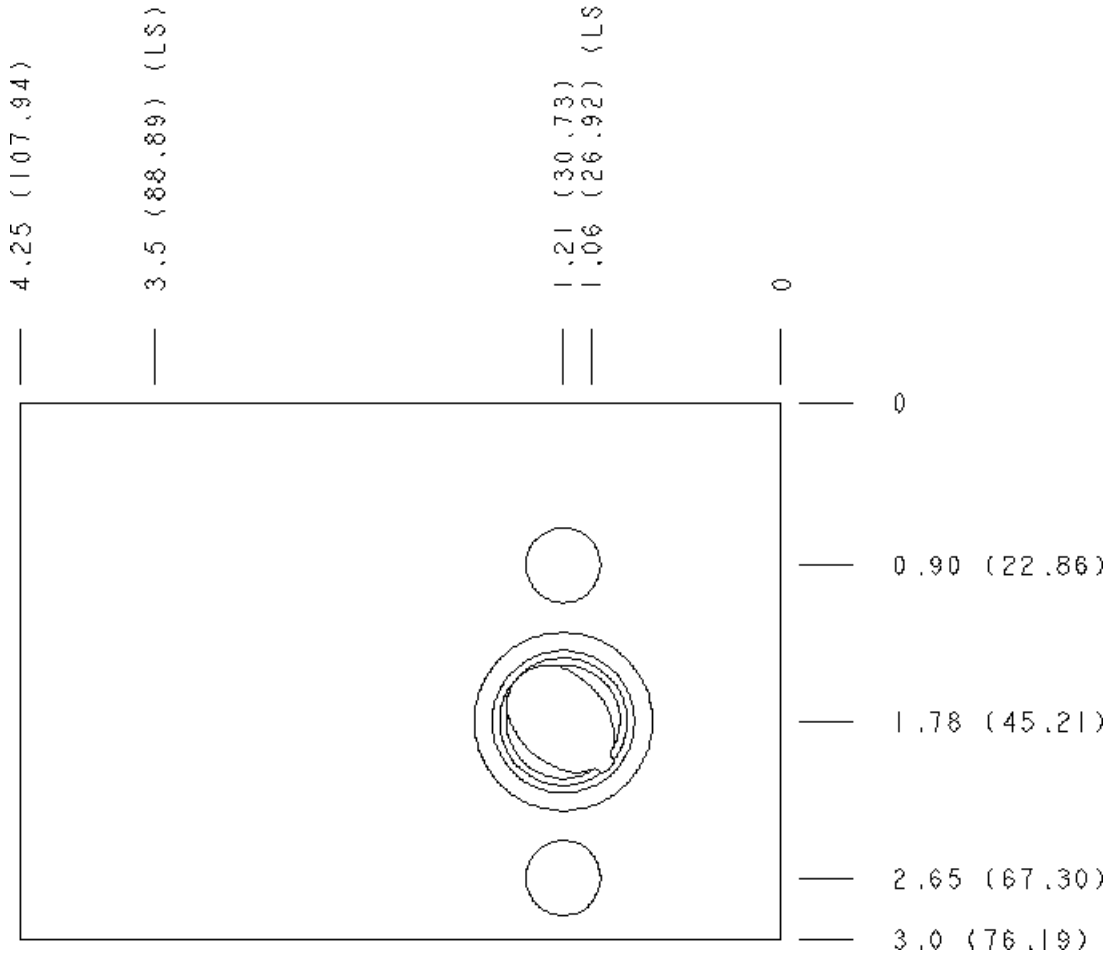
Face 2



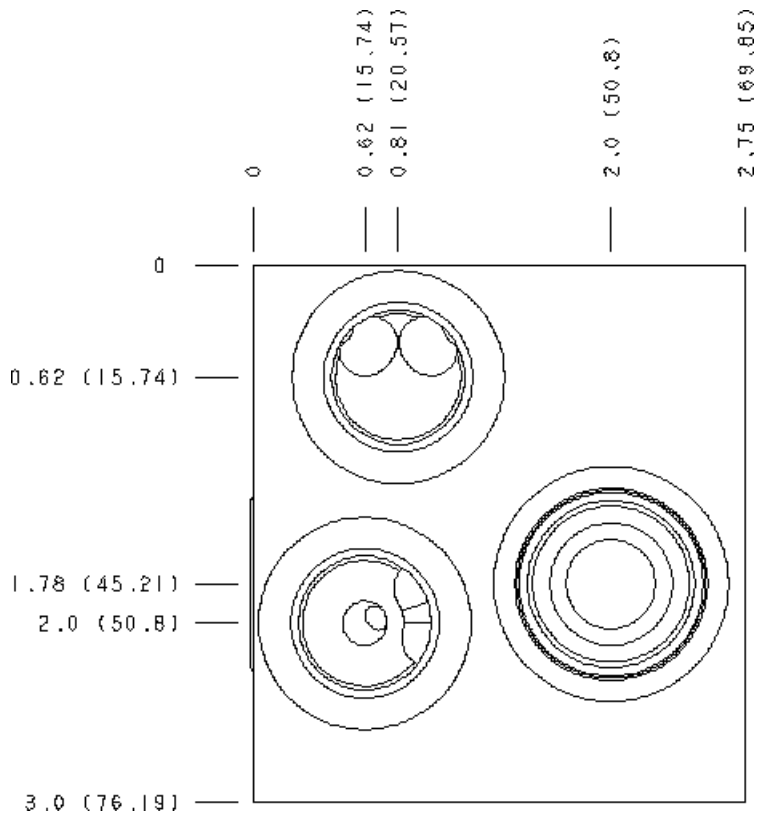
Face 5



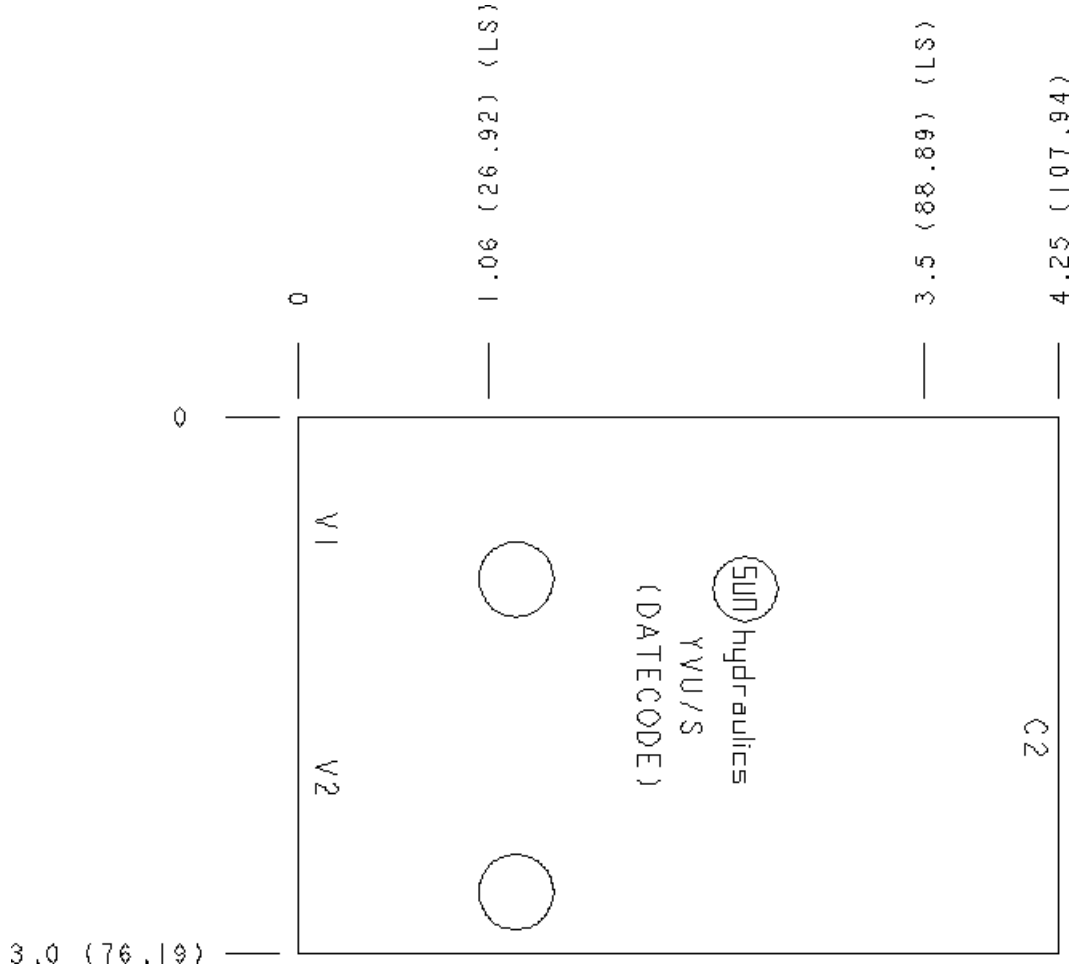
Face 6



Face 7



Face 8



Face 10

