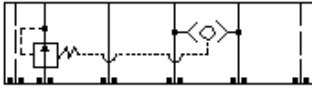
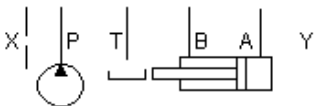


This valve assembly consists of a normally-open restrictive style compensator on the P port and a shuttle that senses pressure from the higher of the 2 work ports. Its purpose is to provide a relatively constant pressure drop across the directional valve thus isolating the directional valve spool from high flow forces. This is accomplished by throttling the supply into the P port. The constant drop creates a pressure compensated flow control out of the directional valve.



Restrictive pressure compensator



## CONFIGURATION

<b>X</b> Control	Not Adjustable
<b>H</b> Differential Pressure	200 psi (14 bar)
<b>V</b> Seal Material	Viton
<b>C</b> Primary Cartridge	C (with LPJC primary cartridge, Normally open, modulating element)
<b>A/S</b> Material Designation	A/S Iron

## TECHNICAL DATA

Body Type	Sandwich
Interface	ISO 08
Capacity	80 gpm
Body Features	Meter in P
Stack Height	3.44 in.
Seal Plate Included (see notes)	No
Operating Characteristic	Restrictive
Model Weight	25.63 lb.

## NOTES

- Seal retainer plate is not required for this assembly.
- For detailed information regarding the cartridges contained in this assembly, click on the models codes shown in the Included Components tab.
- **Important:** Carefully consider the maximum system pressure. The pressure rating of the manifold is dependent on the manifold material, with the port type/size a secondary consideration. Manifolds constructed of aluminum are not rated for pressures higher than 3000 psi (210 bar), regardless of the port type/size specified.

## OPTION SELECTION EXAMPLE: YFIAXHVCA/S

### PRIMARY CARTRIDGE CONFIGURATION

CONTROL (X)	DIFFERENTIAL PRESSURE (H)	SEAL MATERIAL (V)
<b>X</b> Not Adjustable	<b>H</b> 200 psi (14 bar)	<b>V</b> Viton
<b>P</b> External 1/4 NPTF Pilot Port, Port 3 Blocked	<b>D</b> 50 psi (3,5 bar)	<b>N</b> Buna-N
	<b>F</b> 100 psi (7 bar)	
	<b>G</b> 150 psi (10,5 bar)	

### PRIMARY CARTRIDGE (C)

<b>C</b> C (with LPJC primary cartridge, Normally open, modulating element)
---

### INCLUDED COMPONENTS

Part	Description	Quantity
500-101-114*	O-Ring	2
500-101-121*	O-Ring	4
811-001-002*	Locating Pin	1
A330-106-004*	SAE Plug	1
CSABXXV	Cartridge	1
LPJCXHV	Cartridge - Primary	1

### TECHNICAL FEATURES

- This assembly is normally used in a multi-station load-sense system or with a pressure compensated pump.
- The pressure differential across the orifice (directional valve) varies with flow and system pressure. It is at its highest at zero flow and drops with increasing flow.
- Another term for this assembly is a hydrostat.