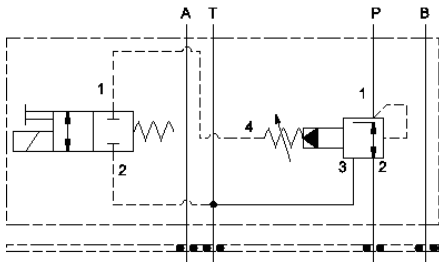
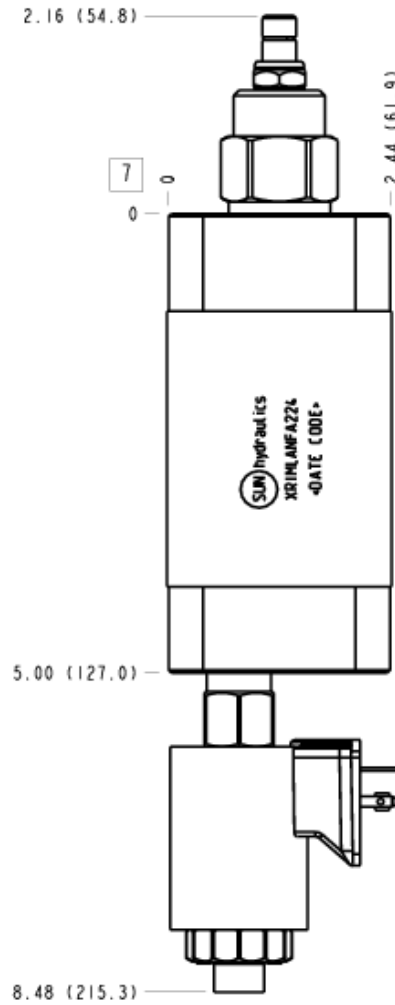


Normally Open



Normally Closed



**CONFIGURATION**

L Control	Standard Screw Adjustment
A Minimum Control Pressure	
N Seal Material	Buna-N
F Solenoid Designation	740 Coil-Normally Open (with PVFA8 primary cartridge, Pilot-operated, pressure reducing/relieving main stage with integral T-8A control cavity and drain to port 4)
A Port and Material Designation	A Aluminum
224 Coil	DIN 43650 3 pin (Hirschman) 24 VDC

This sandwich valve assembly consists of an externally drained reducer/reliever on P with a normally-closed solenoid valve on the drain. This package is meant to provide a dual pressure function. This assembly is available in both normally open H option and normally closed C option. When the solenoid valve is open the reducer/reliever controls the pressure at P; closing the solenoid causes the pressure to increase to system pressure.

**TECHNICAL DATA**

Body Type	Sandwich
Interface	ISO 05
Capacity	20 gpm
Body Features	On P
Stack Height	2.49 in.
Seal Plate Included (see notes)	Yes
Model Weight	4.26 lb.

**NOTES**

- Stack height value in technical data table includes seal retainer plate.
- Please consider stack requirements when choosing a coil. Sun explosion proof coils are larger than other coils and may interfere with components above or below this manifold. A tap in manifold can be used to add additional clearance.
- For detailed information regarding the cartridges contained in this assembly, click on the models codes shown in the Included Components tab.
- **Important:** Carefully consider the maximum system pressure. The pressure rating of the manifold is dependent on the manifold material, with the port type/size a secondary consideration. Manifolds constructed of aluminum are not rated for pressures higher than 3000 psi (210 bar), regardless of the port type/size specified.

## OPTION SELECTION EXAMPLE: XRIMLANFA224

### PRIMARY CARTRIDGE CONFIGURATION

<b>CONTROL</b> (L)	<b>MINIMUM CONTROL PRESSURE</b> (A)	<b>SEAL MATERIAL</b> (N)
L Standard Screw Adjustment	A 100 - 3000 psi (7 - 210 bar), 200 psi (14 bar) Standard Setting	N Buna-N V Viton

### SOLENOID DESIGNATION (F)

F 740 Coil-Normally Open (with PVFA primary cartridge, Pilot-operated, pressure reducing/relieving valve with drain to port 4)
U 740 Coil-Normally Closed (with PVFA primary cartridge, Pilot-operated, pressure reducing/relieving valve with drain to port 4)
F 740 Coil-Normally Open (with PVFA8 primary cartridge, Pilot-operated, pressure reducing/relieving main stage with integral T-8A control cavity and drain to port 4)
U 740 Coil-Normally Closed (with PVFA8 primary cartridge, Pilot-operated, pressure reducing/relieving main stage with integral T-8A control cavity and drain to port 4)

### COIL \* (224)

224 DIN 43650 3 pin (Hirschman) 24 VDC
No Coil

\* Additional coil options are available

### INCLUDED COMPONENTS

Part	Description	Quantity
500-001-014*	O-Ring	5
700-001*	Seal Plate	1
850-004-188*	Plug	1
850-004-218*	Plug	1
DTAFMHN224	Cartridge	1
PVFALAN	Cartridge - Primary	1

### TECHNICAL FEATURES

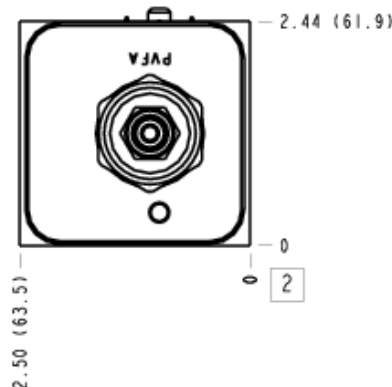
- This assembly is well suited to loading and unloading a pump.
- The nature of a vented relief is that it brings the pressure up in a smooth manner. Unloading is abrupt.

### MANIFOLD FACES

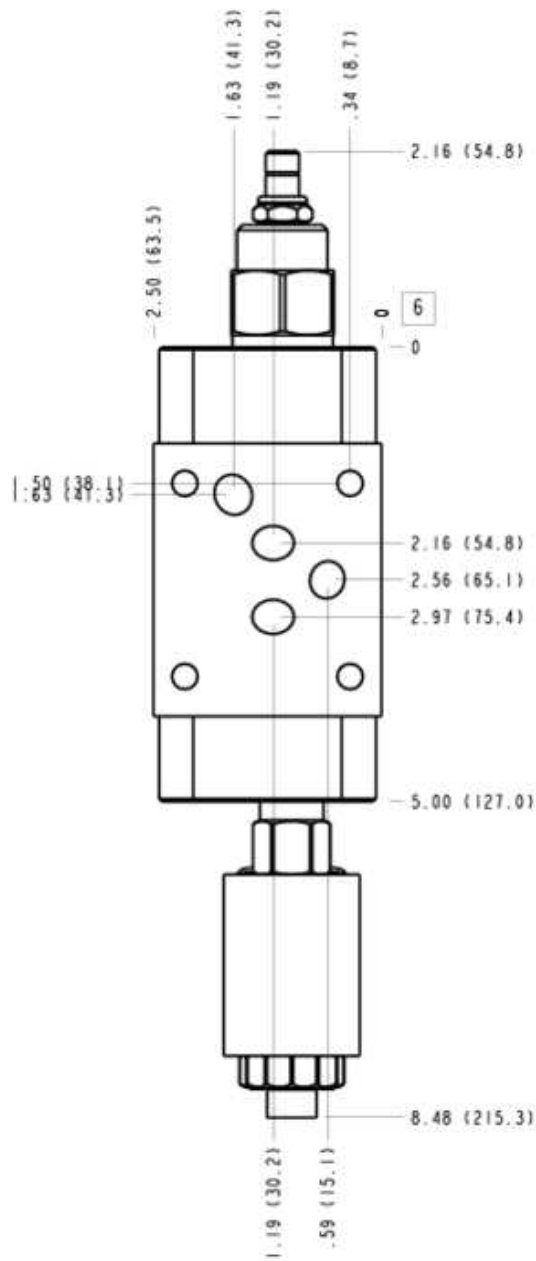
#### FACE GRID

1	2	3	4
5	6	7	8
9	10	11	12

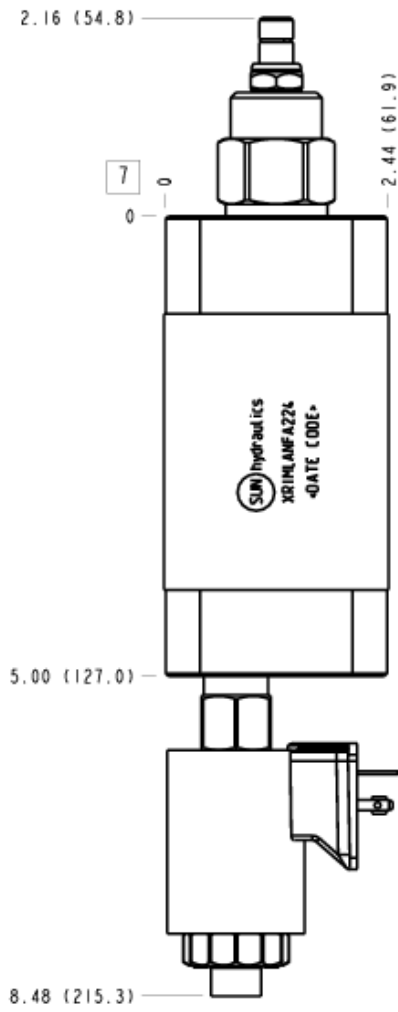
#### Face 2



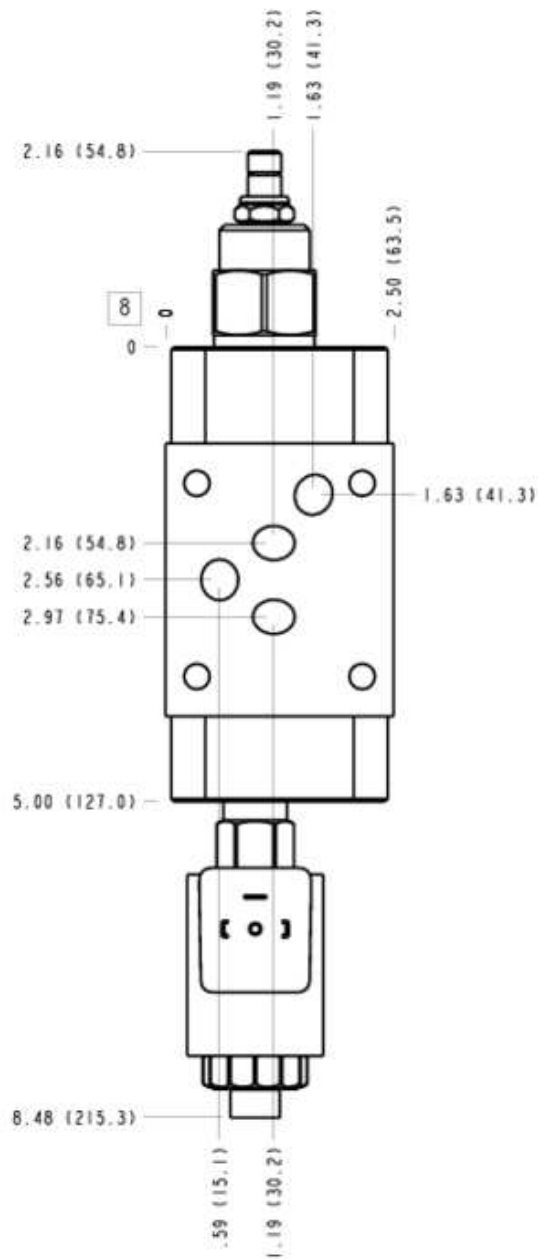
# Face 6



# Face 7



### Face 8



### Face 10

