

### TECHNICAL DATA

Body Type	Gasket mount
Interface	Sun
Body Features	Inline, Direct mount, cross pilot, 2 gasket ports
Mounting Hole Diameter	.42 in.
Mounting Hole Depth	Through
Mounting Hole C'bore Diameter	.59 in.
Mounting Hole Quantity	3
Open Cavities	2
Cavity	T-11A
Port Size	SAE 8
Model Weight	1.13 lb.

**NOTES** *Important:* Carefully consider the maximum system pressure. The pressure rating of the manifold is dependent on the manifold material, with the port type/size a secondary consideration. Manifolds constructed of aluminum are not rated for pressures higher than 3000 psi (210 bar), regardless of the port type/size specified.

## PORT DESIGNATORS

Modifiers	Ports
XVO, /10, /11, /15, /16, /V	Ports V1 & V2: SAE 8;

## INCLUDED COMPONENTS

Part	Description	Quantity
500-001-113	O-Ring	2

## CONFIGURATION OPTIONS

Model Code Example: XVO

### MODIFIER

**6061-T651 Aluminum, Buna-N**

**/11** 6061-T651 Aluminum, Buna-N, Clear Anodize - Per MIL SPEC 8625F Type II, Class I

**/10** 6061-T651 Aluminum, Buna-N, Black Anodize - Per MIL SPEC 8625F Type II, Class II

**/V** 6061-T651 Aluminum, Viton

**/16** 6061-T651 Aluminum, Viton, Clear Anodize - Per MIL SPEC 8625F Type II, Class I

**/15** 6061-T651 Aluminum, Viton, Black Anodize - Per MIL SPEC 8625F Type II, Class II

**/S** 65-45-12 Ductile Iron, Buna-N, Chem. Black

**/S3** 65-45-12 Ductile Iron, Buna-N, Trivalent Clear Zinc with Top Sealer

**/Y** 65-45-12 Ductile Iron, Viton, Chem. Black

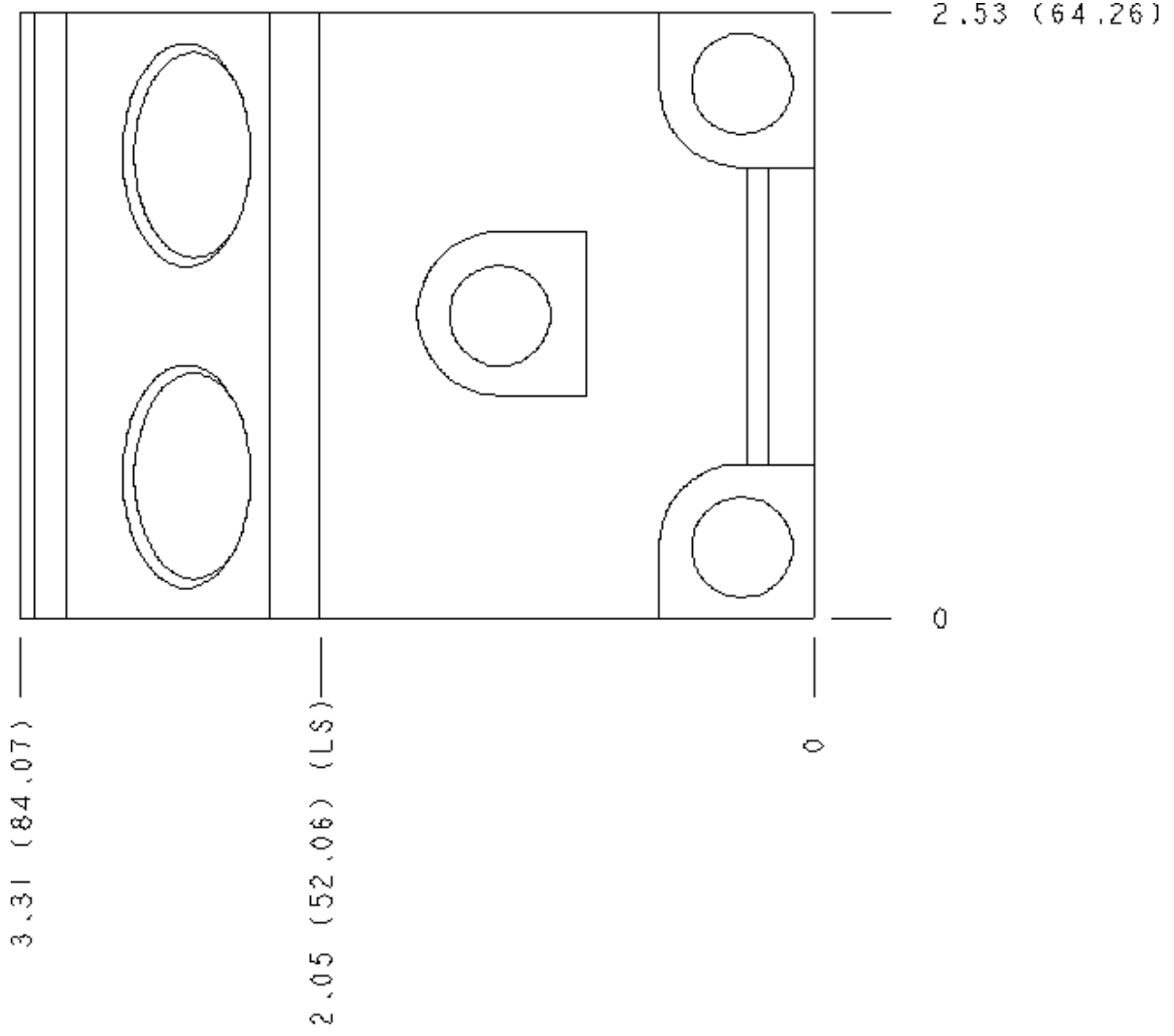
**/Y3** 65-45-12 Ductile Iron, Viton, Trivalent Clear Zinc with Top Sealer

## MANIFOLD FACES

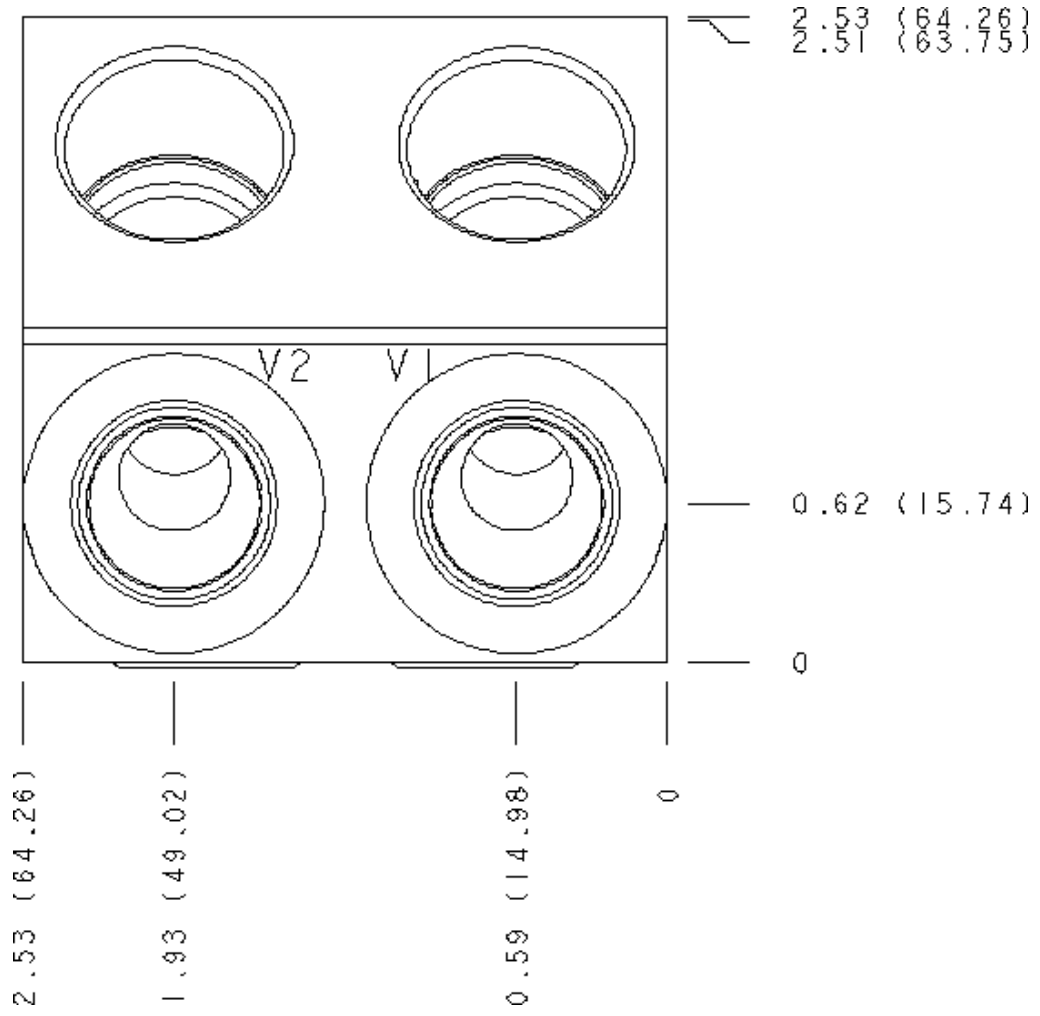
### FACE GRID

1	2	3	4
5	6	7	8
9	10	11	12

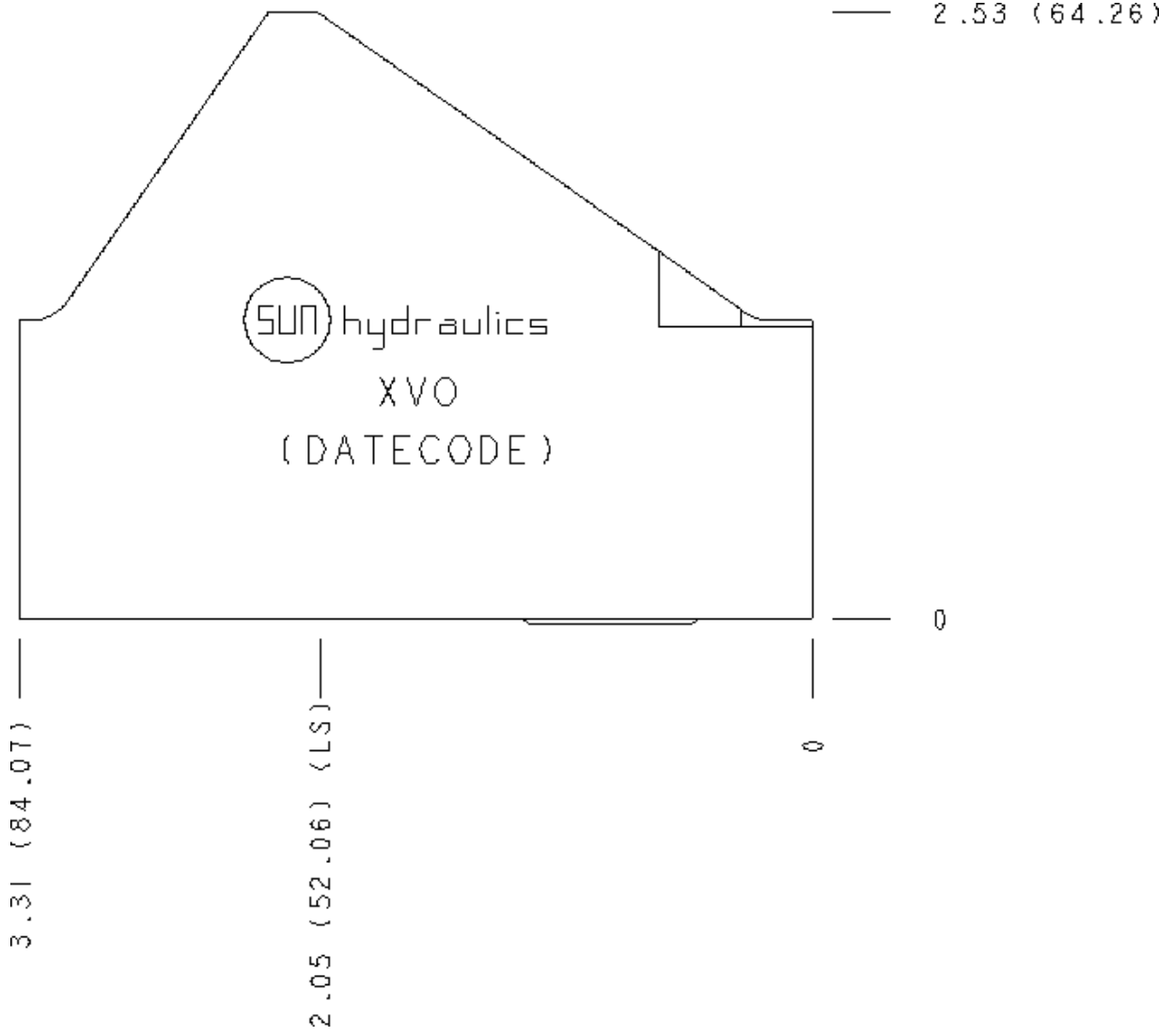
Face 2



Face 5



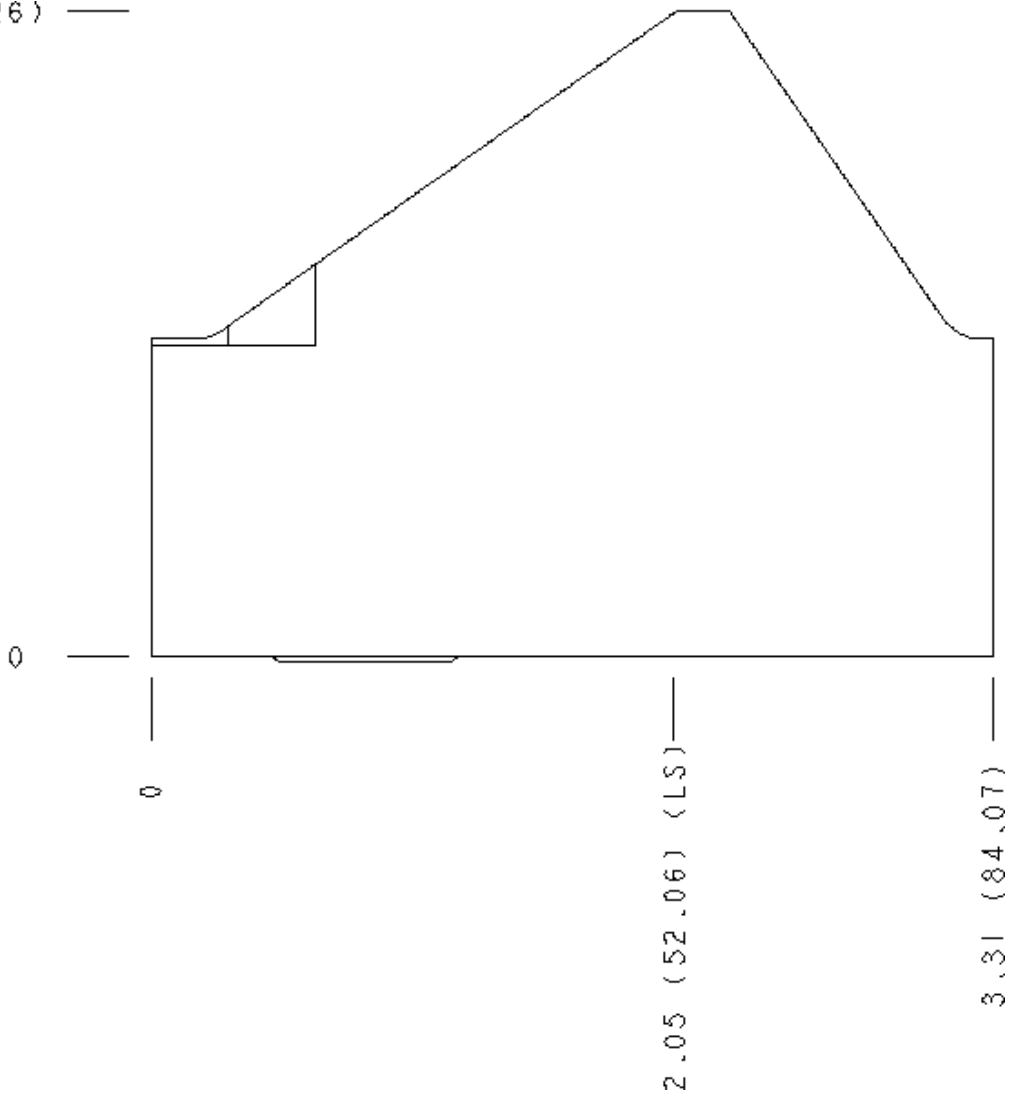
Face 6



Face 7

**Face 8**

2.53 (64.26) —



**Face 10**

□